



**Absolutely The Best Crane Mats In The World.**

This document is stored and available in the Raptor Tech Technical Document Repository.

To help our customers understand certain critical data points that factor into purchasing crane mats, Raptor Tech maintains a repository of technical documents with data from all major crane manufacturers.

You can visit Raptor Tech's repository to get crane specifications and technical details for crane models in addition to this model at:

**<https://library.steelcranemats.com>**

**Thank You for Visiting the [SteelCraneMats.com](https://library.steelcranemats.com) Technical Specifications Document Repository.**

# Grove YB5515-2

## Product Guide

ASME B30.5  
Imperial 85%, Metric 85%, DIN/ISO



### Features

- 13,6 t (15 USt) capacity
- 12,5 m (41 ft) three-section, full-power synchronized boom
- 9,1 t (10 USt) deck carrying capacity
- Load sensing piston pump with hydraulic proportional controls



# Features



## The reach and capacity to get the job done

The standard three-section boom offers 4,6 m – 12,5 m (15 ft – 41 ft) of reach with a max tip height of 14,2 m (46.5 ft). The optional four-section boom offers 5,4 m – 15,4 m (17.8 ft – 50.0 ft) of reach that can be enhanced with the optional 4,6 m (15 ft) swingaway extension to provide a total max tip height of 20,4 m (67 ft).



## Outriggers

The YB5515-2 outriggers are two-position (0° and 100°) beam/jack style outriggers with inverted jack cylinders and pivoting pad.



## Steering

The YB5515-2 comes standard with three steering modes: front (two-wheel), four-wheel coordinated, and four-wheel crab steer with electronic self alignment. Operators can choose between modes via three-position rocker switch located on dash panel.

## Operator cab

New operator control layout with hydraulic proportional joystick controls, tilt steering wheel, and automotive dash panel gauges and indicator lights.



# Contents

Specifications	4
Dimensions and weights	7
Working ranges and load charts (imperial)	9
Working ranges and load charts (metric)	15
Working ranges and load charts (DIN/ISO)	21
Transport and lifting data	27
Rigging chart	28
Symbols glossary	29

# Specifications

## Superstructure



### Boom

4,6 m – 12,5 m (15 ft – 41 ft) three-section, full-power, synchronized, telescopic boom.

Maximum tip height: 14,2 m (46.5 ft)



### \*Optional Boom

5,4 m – 15,4 m (17.8 ft – 50 ft) four-section, full-power, synchronized, telescopic boom.

Maximum tip height: 16,5 m (54 ft)



### \*Optional boom extensions

4,6 m (15 ft) fixed swingaway extension

Maximum tip height with standard boom: 18,1 m (59.5 ft)

Maximum tip height with optional boom: 20,4 m (67 ft)

Boom extension can be offset 0°, -15°, and -30° via pivoting boom nose on the optional boom.



### Boom nose

Fixed two-sheave quick reeve boom nose with standard 12,5 m (41 ft) boom.

Two-sheave, quick reeve type with-3- pinned pivoting (0°, +40°, and +80°) boom nose design to minimize head space requirements. With optional boom only. Lowers head height 0,4 m (1.3 ft) when nose is pivoted fully forward.



### Boom elevation

Single double acting hydraulic cylinder with integral holding valve. Elevation: 0° to 69°



### Anti-two block device

Standard anti-two block device (hardwired), which, when activated, provides an audible and visual warning to the operator and “locks out” all functions whose movement can cause two-blocking.



### Load Moment Indicator

A simple, effective, and easy to use load moment indicating system used in conjunction with the anti-two block system to assist the operator in efficient operation of the unit within the limits of the load chart. The display panel displays the max. load allowed, the actual hook load, length and angle of the boom, and load radius in Dot Matrix numerical values and provides a load utilization colored bar graph. Inputs by operator are maximum allowed load and parts of line. If non-permitted conditions are approached the L.M.I. will warn the operator with an audible alarm and a warning light and will lock out those functions that may aggravate the condition.



### \* Optional Load Moment Indicator

“Graphics Display” of boom angle, boom length, load radius, and capacity. Operator input to set the limit parameters based on the load chart. Displays color coded light bar and audible alarm with function cut-out if load exceeds the load chart parameters.



### Swing

Ball bearing swing circle with 360° continuous rotation. Worm gear and pinion driven by hydraulic motor. Spring applied, hydraulic released brake. Equipped with swing enable control. Maximum speed: 2.5 rpm



### Hydraulic system

One pressure compensated variable displacement axial piston pump, with load sensing.

Maximum output of: 155 LPM (41.0 GPM)

Maximum operating pressure: 276 bars (4000 p.s.i.)

Four section valve bank, chassis mounted, operated via dash mounted pilot pressure hydraulic joystick controllers.

140L (37 gal) steel hydraulic reservoir with sight level gauge and steel side plating to guard against side impact.

Return line replaceable filter with by-pass protection and service indicator. Cartridge filter rating of 3 micron.

# Specifications



## Hoist specifications

Two speed gear motor driven hoist with automatic spring applied / hydraulically released wet brake. Smooth drum with cable follower.

Maximum hoist pull (first layer): 63,6 kN (14,300 lb)

Maximum permissible single line pull:  
44,5 kN (10,000 lb.) (3.5:1 design factor)

Maximum single line speed: 64 m/min (210 fpm)

Rope construction: 6 x 19 XXIPS / IWRC

Rope diameter: 14 mm (9/16 in)

Rope length: 97,5 m (320 ft)

## Carrier



## Chassis

High strength alloy frame constructed with integral outrigger housings; front and rear lifting, tie-down, and towing lugs. 6,2 m<sup>2</sup> (66.3 sq ft) carry deck size with 9072 kg (20,000 lb) deck only carrying capacity. Deck coated with anti-skid treatment.



## Outriggers

Single stage hydraulic telescoping beam with oblique style jack cylinder on all four corners. Provides extended and down and retracted and down lifting capabilities.

Integral holding valve on both beam and jack.

Outrigger positioning indicator located in dash display.

Outrigger pad size: 222 mm x 254 mm  
(8.75 in x 10 in)

Maximum outrigger pad load: 15 876 kg (35,000 lb)



## Outrigger controls

Independent outrigger control rocker switches for beam or jack selection with a separate extend /retract rocker selector switch. 360° level bubble located inside cab.



## Engine (Tier IV)

Cummins QSB 3.3L four cylinder / turbo-charged diesel rated at 75kW (100 hp) at 2600 rpm. Includes std. 120V engine block heater and air intake "Grid" heater. Engine hour meter located in dash display. Alternator: 120 amp. Maximum Torque: 414Nm (305 ft/lb).

Fuel requirements: Maximum of 15 ppm sulphur content. Requires "Ultra Low" sulphur diesel fuel.

NOTE: Tier IV required for sale in North America and European Union countries.



## Engine (Tier III)

Cummins QSB 3.3L four cylinder / turbo-charged diesel rated at 74kW (99 hp) at 2600 rpm. Includes std. 120V engine block heater and air intake "Grid" heater. Engine hour meter located in dash display. Alternator: 90 amp. Maximum Torque: 415Nm (306 ft/lb)

NOTE: Required for sale outside of North America and European Union countries.



## Fuel tank capacity

Steel with side impact plate. Capacity: 151.4L (40 gal).



## Transmission

Powershift with four speeds forward and four reverse. Steering column mounted shifter.



## Operators control station

Frame mounted, open air style control station with cab shell includes all crane functions and driving controls and equipped with overhead safety glass. Other standard equipment includes a suspension seat with seat belt, sight level bubble and 1,1 kg (2.5 lb) fire extinguisher, and tilt steering wheel. The dash panel will display the fuel level gauge, water temperature gauge, engine rpm, battery voltage, and hour meter. Indicator lights will display parking brake, low transmission pressure, low brake pressure, outrigger position, headlights, work lights (if ordered), and hoist 3rd wrap (if ordered). Crane function indicator and turn signal indicators are also included. The load indicator display will be mounted on the top of the dash panel for direct line of sight for the operator.



# Specifications



## \*Operators control station enclosed

Includes the standard cab shell and all controls and indicators noted above, with the addition of front, rear, and right side glass, a split (two-piece) hinged door with sliding glass, front windshield wiper and washer, hot water heater and defroster with fan and cab dome light.



## Electrical system

One heavy duty maintenance free 12V battery, 820CCA at 0°F



## Drive

Two-wheel (front-wheel) as standard with four-wheel-drive as an option. Drive axles supplied with planetary hubs and limited slip differential.



## Steer

Standard three steering modes.  
Front (two wheel), four wheel coordinated, and four wheel crab steer with electronic self realignment. Three position rocker switch located on dash panel.

Outside Turning Radius:

Two wheel steer: 6,2 m (20 ft 4.8 in)

Four wheel steer: 3,9 m (13 ft 1.0 in)



## Suspension/axles

Front: Drive / steer in both two wheel drive and four wheel drive

Rear: non-drive with steer in two wheel drive, drive/steer in four wheel drive

Front axle is rigid mounted to frame.

Rear axle offers 1.5° of oscillation



## Brakes

Hydraulic actuated internal wet-disc service brake acting on each drive wheel. Dash mounted rocker switch with indicator light for activating or release of the dry disc parking brake mounted on the transmission output yoke.



## Tires

Tubeless type, semi-aggressive tread, 12.00R20.



## Lights

Full LED lighting includes turn indicators, head, tail, brake, and hazard warning lights recessed mounted.



## Maximum speed

33.8 km/h (21.0 mph)



## Gradeability (theoretical)

68%.....(to drive train stall) NO LOAD

40%.....(to drive train stall) with 9072 kg (20,000 lb) DECK LOAD

## Gross vehicle weight (G.V.W.)

13 488 kg (29,735 lb) basic unit with Tier IV engine.

## Miscellaneous standard equipment

18 t (20 USt) two sheave low profile “galvanize coated” hook block with “quick reeve design”. Back-up motion alarm; outrigger motion alarm; non-skid decking; front and rear lifting, towing, and tie-down lugs.

## \*Optional equipment

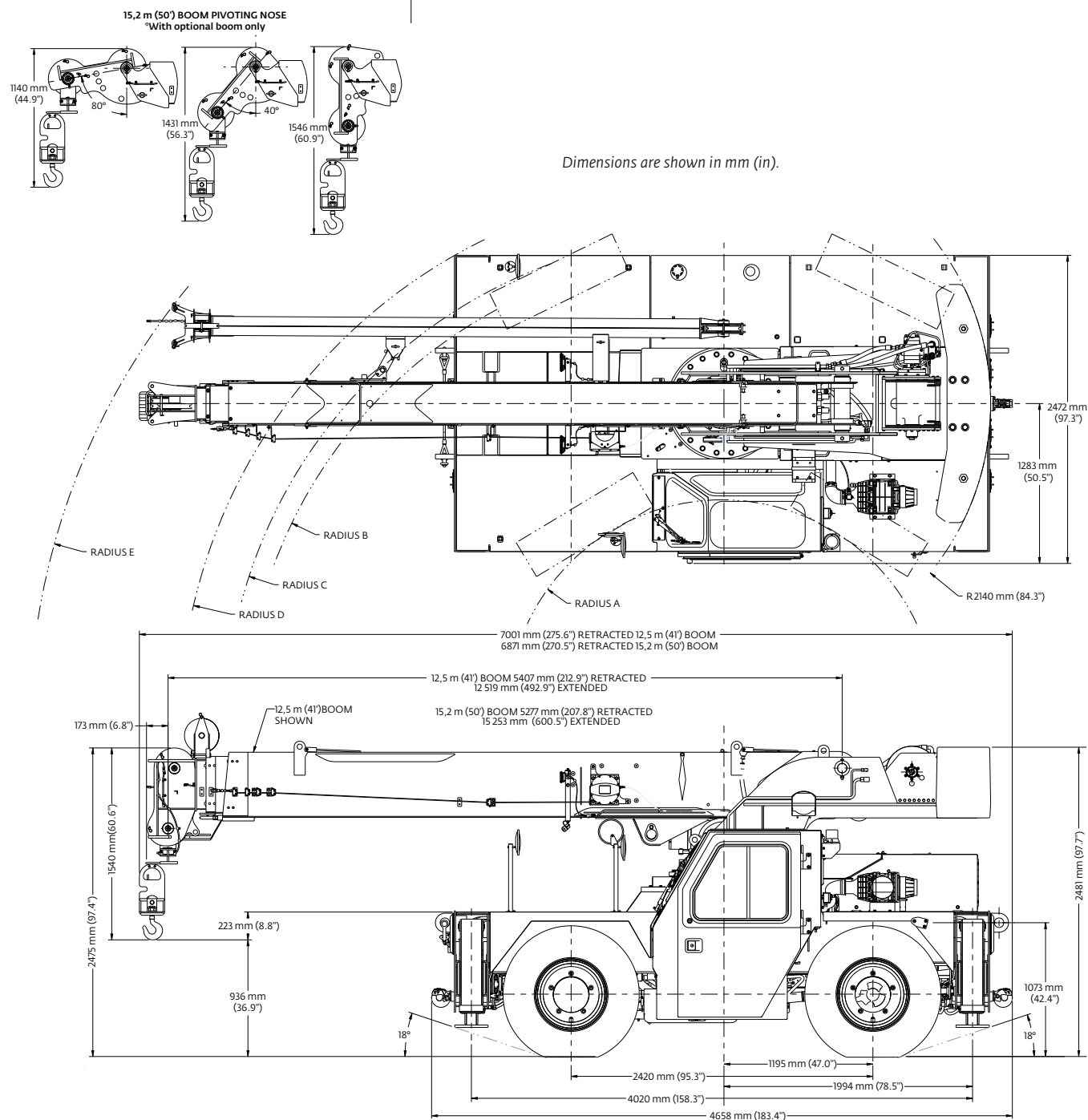
- **AUXILIARY LIGHTING:** Includes cab mounted amber flashing light and dual base boom mounted LED work lights.
- **CONVENIENCE PACKAGE:** Includes front and rear pintle hitch, dual rear view mirrors, head and tail light metal mesh grille covers.
- **ENCLOSED CAB PACKAGE:** Includes heater and defroster, cab dome light, all window glass, and two-piece split door.
- **FOUR WHEEL DRIVE**
- Below deck hydraulic tow winch with 4536 kg (10,000 lb) capacity.
- 4,6 m (15 ft) fixed boom extension
- Air conditioning (enclosed cab option required)
- Hoist third wrap indicator with hoist function cut-out
- Hoist drum rotation indicator
- 360° swing lock
- C.E. compliant package

*\*Denotes optional equipment*

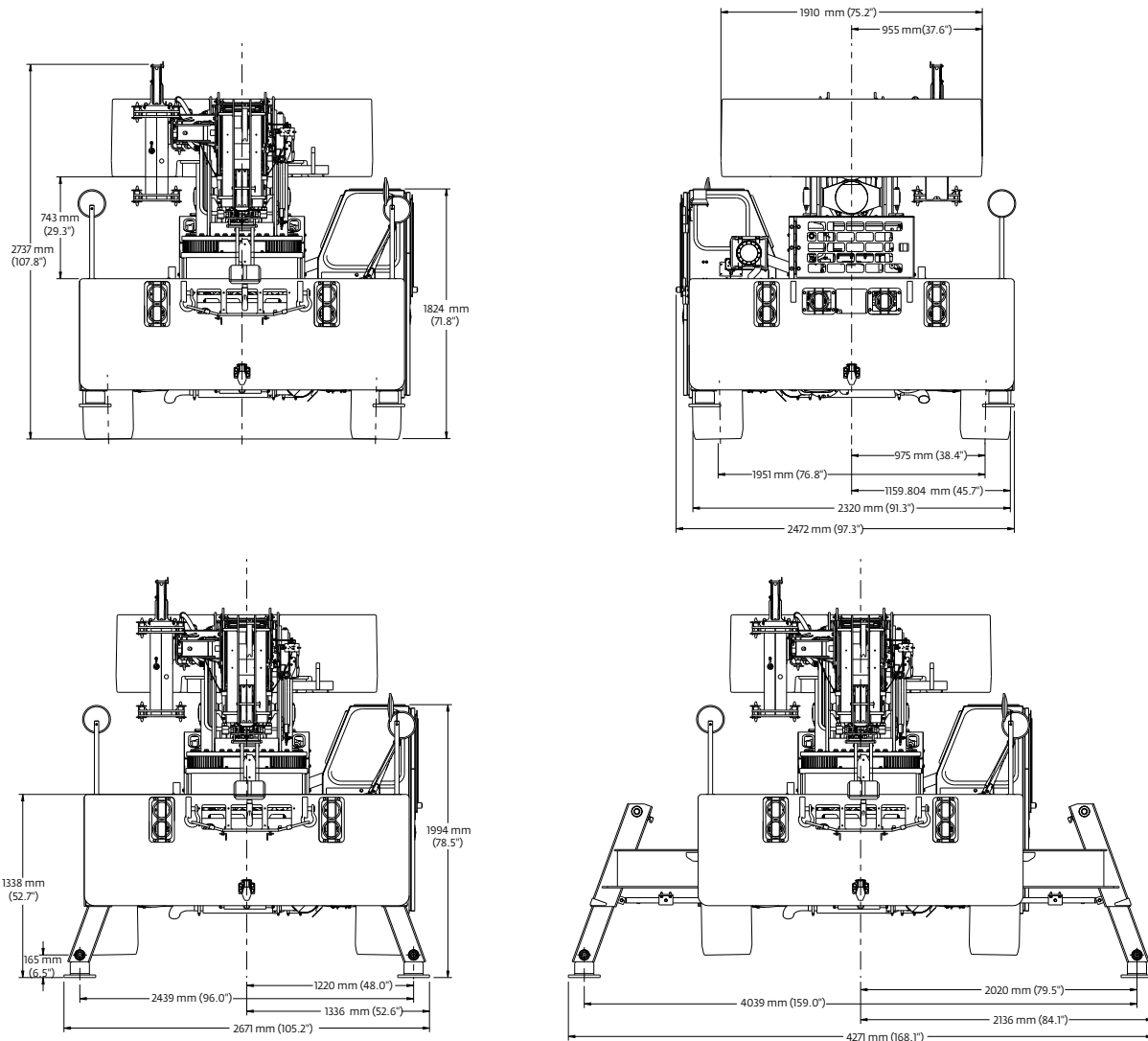


# Dimensions

Dimensions						
	A	B	C	D	E 12.5 m (41 ft) boom	E 15,2 m (50 ft) boom
Two-wheel steer	3375 mm (11 ft 1 in)	6058 mm (19 ft 10.5 in)	6218 mm (20 ft 4.8 in)	6675 mm (21 ft 10.8 in)	7750 mm (25 ft 5 in)	7662 mm (25 ft 2 in)
Four-wheel steer	1722 mm (5 ft 8 in)	3841 mm (12 ft 7 in)	3993 mm (13 ft 1 in)	4481 mm (14 ft 8 in)	5572 mm (18 ft 3 in)	5478 mm (18 ft 0 in)



# Dimensions and weights

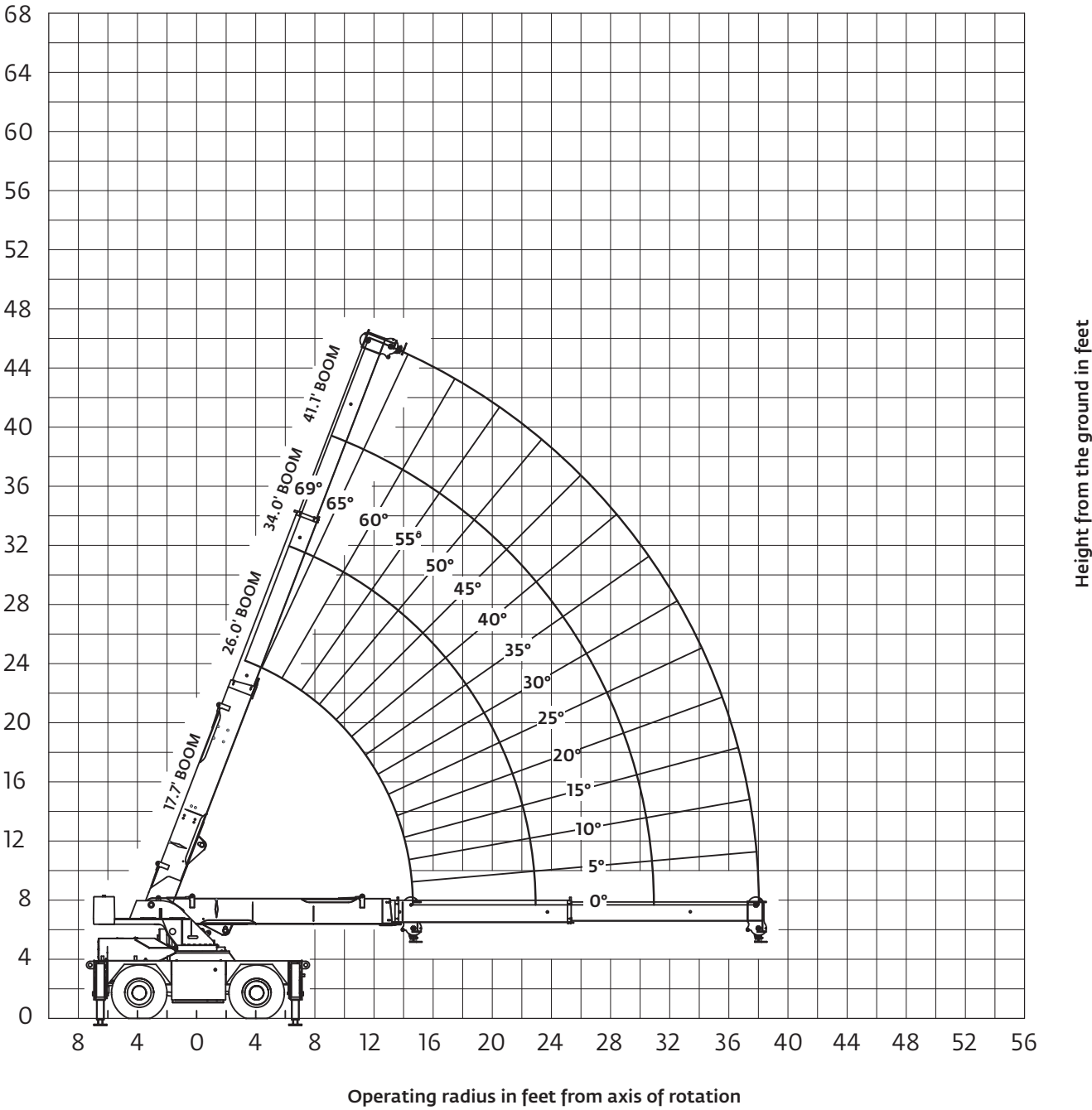


## Weights

	GVW		Front		Rear	
	kg	lb	kg	lb	kg	lb
<b>Basic machine:</b> Including 12,5 m (41 ft) main boom, main hoist with 97,5 m (320 ft) of wire rope, 18 t (20 USt) hook block, full counterweight, Tier IV engine	13 488	29,735	5817	12,823	7671	16,912
<b>Add:</b> enclosed cab, heater and glass	84,8	187	37,1	82	47,6	105
<b>Crane weight</b>	13 573	29,922	5854	12,905	7719	17,017
<b>Basic machine:</b> Including 12,5 m (41 ft) main boom, main hoist with 97,5 m (320 ft) of wire rope, 18 t (20 USt) hook block, full counterweight, Tier IV engine	13 488	29,735	5817	12,823	7671	16,912
<b>Add:</b> 4,6 m (15 ft) fixed swingaway extension and extension carrier brackets and downhaul weight	178	394	271	598	-93	-204
<b>Crane weight</b>	13 666	30,129	6088	13,421	7578	16,708
<b>Basic machine:</b> Including 12,5 m (41 ft) main boom, main hoist with 97,5 m (320 ft) of wire rope, 18 t (20 USt) hook block, full counterweight, Tier IV engine	13 488	29,735	5817	12,823	7671	16,912
<b>Add:</b> 5,4 m - 15,4 m (17.8 ft - 50 ft) four-section full-power boom	435	961	363	802	72	159
<b>Crane weight</b>	13 923	30,696	6180	13,625	7743	17,071

# Working range imperial

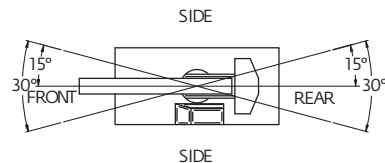
Working range: 5,5 m -12,5 m (18 ft - 41 ft) boom (standard)



# Load chart imperial

MAIN BOOM LOAD RATINGS ON OUTRIGGERS Extended and Down 360° or Retracted and Down Front/Rear								
Radius (ft)	17.7 ft BOOM		26 ft BOOM		34 ft BOOM		41.1 ft BOOM	
	Boom Angle (deg)	Rated Load (lb)	Boom Angle (deg)	Rated Load (lb)	Boom Angle (deg)	Rated Load (lb)	Boom Angle (deg)	Rated Load (lb)
6	65	30,000	—	—	—	—	—	—
8	57	26,850	68.5	26,400	—	—	—	—
10	48	22,300	63.5	21,000	—	—	—	—
12	37.5	18,600	58.5	17,500	67	17,000	—	—
14	21.5	15,000	53	14,900	63	14,000	68.5	13,350
14.7	0	13,500	51	13,500	61.5	13,250	67.5	13,100
16	—	—	46.5	12,250	59	12,400	65.5	12,450
18	—	—	40	11,000	55	11,200	63	11,350
20	—	—	31.5	9200	50.5	9550	59	9680
22	—	—	19.5	7400	45.5	8300	55.5	8450
22.9	—	—	0	6900	43.5	7750	54	7750
24	—	—	—	—	40.5	7100	52	7340
26	—	—	—	—	34.5	6000	48	6450
28	—	—	—	—	27	5300	44	5730
30	—	—	—	—	16.5	4500	39.5	5120
30.9	—	—	—	—	0	4100	38	4850
32	—	—	—	—	—	—	34.5	4620
34	—	—	—	—	—	—	29	4180
36	—	—	—	—	—	—	21	3800
37.9	—	—	—	—	—	—	0	3480

MAIN BOOM LOAD RATINGS ON OUTRIGGERS Retracted and Down 360°								
Radius (ft)	17.7 ft BOOM		26 ft BOOM		34 ft BOOM		41.1 ft BOOM	
	Boom Angle (deg)	Rated Load (lb)	Boom Angle (deg)	Rated Load (lb)	Boom Angle (deg)	Rated Load (lb)	Boom Angle (deg)	Rated Load (lb)
6	65	26,000	—	—	—	—	—	—
8	57	19,500	68.5	17,940	—	—	—	—
10	48	13,630	63.5	12,890	—	—	—	—
12	37.5	9730	58.5	9920	67	9500	—	—
14	21.5	7390	53	7720	63	7680	68.5	7440
14.7	0	6810	51	6800	61.5	6850	67.5	6850
16	—	—	46.5	6165	59	6310	65.5	6200
18	—	—	40	5030	55	5200	63	5250
20	—	—	31.5	4190	50.5	4350	59	4420
22	—	—	19.5	3530	45.5	3690	55.5	3770
22.9	—	—	0	3280	43.5	3450	54	3550
24	—	—	—	—	40.5	3160	52	3240
26	—	—	—	—	34.5	2730	48	2810
28	—	—	—	—	27	2370	44	2450
30	—	—	—	—	16.5	2080	39.5	2140
30.9	—	—	—	—	0	1950	38	1910
32	—	—	—	—	—	—	34.5	1880
34	—	—	—	—	—	—	29	1650
36	—	—	—	—	—	—	21	1460
37.9	—	—	—	—	—	—	0	1290



1) The rated loads are the maximum lift capacities as determined by operating radius, boom length and boom angle. The operating radius is the horizontal distance from a projection of the axis of rotation to the supporting surface, before loading, to the center of vertical hoist line or tackle with load applied.

2) The rated loads shown on outriggers do not exceed 85% of actual tipping. The rated loads shown on rubber do not exceed 75% of actual tipping. Retracted outrigger loads meet ASME B30.5-2011. These ratings are based on freely suspended loads with the crane leveled, standing on a firm, uniform supporting surface. Practical working loads depend on supporting surface, operating radius and other factors affecting stability. Hazardous surroundings, climatic conditions, experience of personnel and proper training must all be taken into account by the operator.

3) The weights of all load handling devices such as hooks, hook blocks, slings, etc., except the hoist rope, shall be considered part of the load. See above.

4) Ratings on outriggers are for either outriggers fully extended and down or fully retracted and down. Ratings for outriggers fully retracted and down will apply for any intermediate outrigger setting.

5) Ratings on rubber depend on 12.00R20 tire capacity, condition of tires and proper inflation pressure (130 psi). Loads on rubber may be transported at a maximum speed of 2.5 mph on a smooth, hard, level surface with boom retracted to the shortest length possible and centered over front. Do not use jib with crane on rubber.

6) For operating radius not shown, use load rating of next larger radius.

7) The maximum deck load only is 20,000 lb. Combined boom and deck loads are not permitted on rubber.

8) Do not induce any external side loads to boom or jib.

**NOTES:**  
SHADED AREAS ARE GOVERNED BY STRUCTURAL STRENGTH, DO NOT RELY ON TIPPING.

OPERATION OF THIS EQUIPMENT IN EXCESS OF RATING CHARTS AND DISREGARD OF INSTRUCTIONS IS DANGEROUS AND VOIDS WARRANTY.

THIS CHART IS ONLY A GUIDE AND SHOULD NOT BE USED TO OPERATE THE CRANE.

The individual crane's load chart, operating instructions and other instructional plates must be read and understood prior to operating the crane.

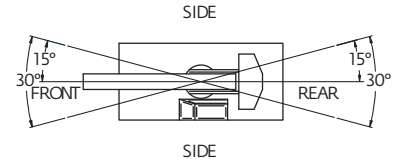
# Load chart imperial

MAIN BOOM ON RUBBER		
Any Boom Length		
Radius (ft)	Front Rating (lb)	360° Rating (lb)
6	17,800	15,650
8	14,600	11,400
10	11,800	9720
12	9550	8590
14	8010	6710
14.7	7500	5750
16	6930	5390
18	5610	4400
20	4730	3630
22	3960	3080
22.9	3650	2850
24	3300	2585
26	2860	2255
28	2530	1980
30	2310	1760
30.9	2100	1650
32	2035	1540
34	1875	1375
36	1650	1260
37.9	1450	1100

NOTES:  
JIB CAPACITY IS LIMITED BY BOTH STRUCTURAL CAPACITY CHART AND MAIN CAPACITY CHART.

SHADED AREAS ARE GOVERNED BY STRUCTURAL STRENGTH, DO NOT RELY ON TIPPING.

OPERATION OF THIS EQUIPMENT IN EXCESS OF RATING CHARTS AND DISREGARD OF INSTRUCTIONS IS DANGEROUS AND VOIDS WARRANTY.



1) The rated loads are the maximum lift capacities as determined by operating radius, boom length and boom angle. The operating radius is the horizontal distance from a projection of the axis of rotation to the supporting surface, before loading, to the center of vertical hoist line or tackle with load applied.

2) The rated loads shown on outriggers do not exceed 85% of actual tipping. The rated loads shown on rubber do not exceed 75% of actual tipping. Retracted outrigger loads meet ASME B30.5-2011. These ratings are based on freely suspended loads with the crane leveled, standing on a firm, uniform supporting surface. Practical working loads depend on supporting surface, operating radius and other factors affecting stability. Hazardous surroundings, climatic conditions, experience of personnel and proper training must all be taken into account by the operator.

3) The weights of all load handling devices such as hooks, hook blocks, slings, etc., except the hoist rope, shall be considered part of the load. See above.

4) Ratings on outriggers are for either outriggers fully extended and down or fully retracted and down. Ratings for outriggers fully retracted and down will apply for any intermediate outrigger setting.

5) Ratings on rubber depend on 12.00R20 tire capacity, condition of tires and proper inflation pressure (130 psi). Loads on rubber may be transported at a maximum speed of 2.5 mph on a smooth, hard, level surface with boom retracted to the shortest length possible and centered over front. Do not use jib with crane on rubber.

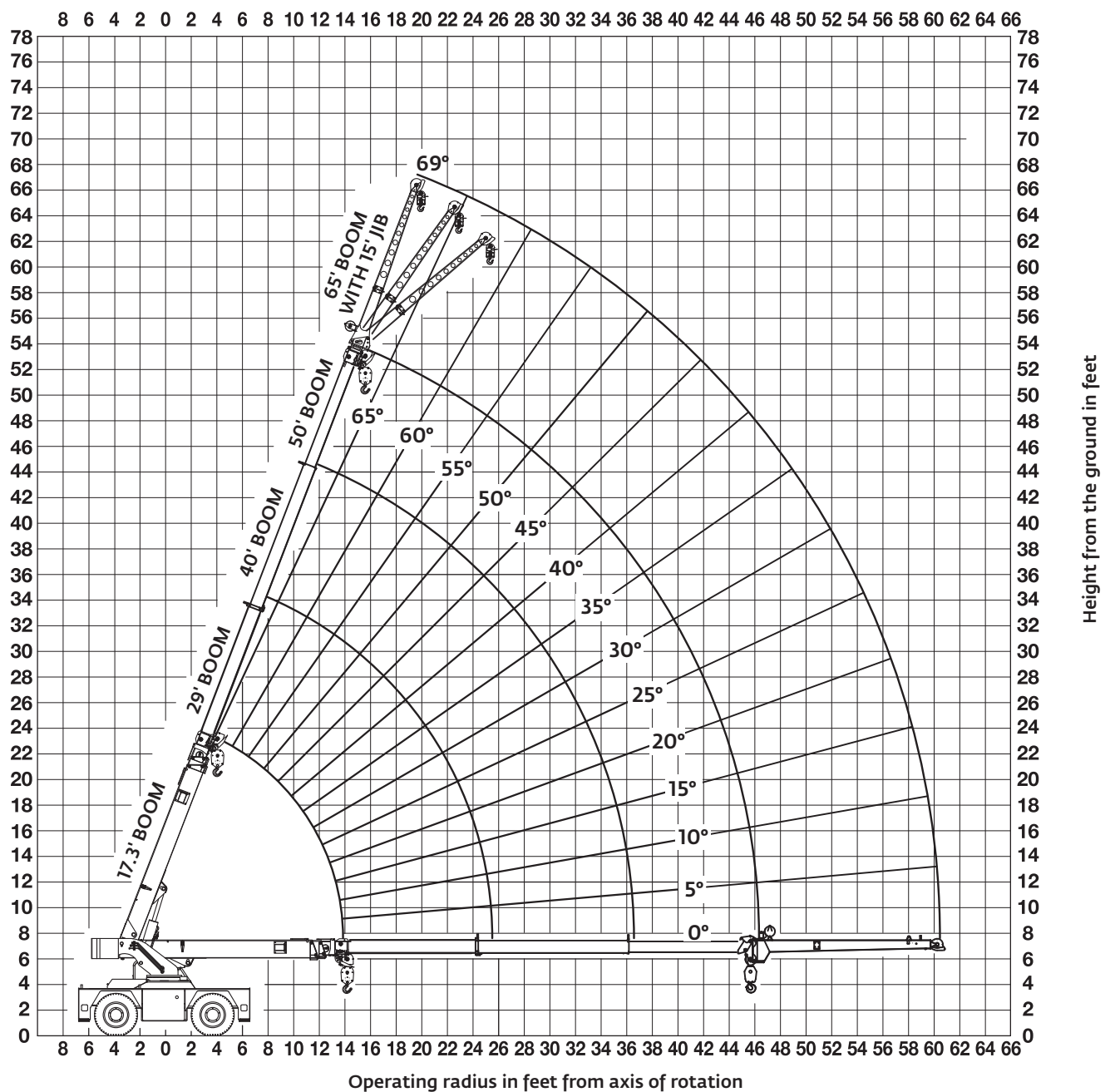
6) For operating radius not shown, use load rating of next larger radius.

7) The maximum deck load only is 20,000 lb. Combined boom and deck loads are not permitted on rubber.

8) Do not induce any external side loads to boom or jib.

# Working range imperial

Working range: 5,4 m - 15,4 m (17.8 ft - 50 ft) (optional)



THIS CHART IS ONLY A GUIDE AND SHOULD NOT BE USED TO OPERATE THE CRANE.

The individual crane's load chart, operating instructions and other instructional plates must be read and understood prior to operating the crane.

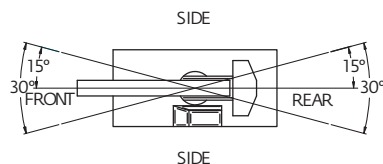
# Load chart imperial

## MAIN BOOM LOAD RATINGS ON OUTRIGGERS Extended and Down 360° or Retracted and Down Front/Rear

Radius (ft)	17.3 ft BOOM		29 ft BOOM		40 ft BOOM		50 ft BOOM	
	Boom Angle (deg)	Rated Load (lb)	Boom Angle (deg)	Rated Load (lb)	Boom Angle (deg)	Rated Load (lb)	Boom Angle (deg)	Rated Load (lb)
6	64.5	30,000	—	—	—	—	—	—
8	56.5	25,760	—	—	—	—	—	—
10	47	21,270	67	16,950	—	—	—	—
12	36	18,050	62.5	16,950	—	—	—	—
14.2	0	13,100	57.5	15,520	67.5	15,520	—	—
16	—	—	53	12,420	65	12,420	—	—
18	—	—	47.5	10,990	61.5	10,990	68.5	10,990
20	—	—	41	9830	58	9800	66	9830
22	—	—	34	8600	54.5	8670	63	8700
24	—	—	25	7400	51	7490	60.5	7500
25.9	—	—	0	6480	47	6580	58	6620
28	—	—	—	—	42.5	5770	55	5800
30	—	—	—	—	38	5130	52	5160
32	—	—	—	—	32.5	4510	49	4620
34	—	—	—	—	25.5	4120	45.5	4160
36	—	—	—	—	16	3710	42	3710
36.9	—	—	—	—	0	3620	40.5	3590
38	—	—	—	—	—	—	38	3410
40	—	—	—	—	—	—	34	3040
42	—	—	—	—	—	—	29	2760
44	—	—	—	—	—	—	23	2410
46.9	—	—	—	—	—	—	0	2110

## MAIN BOOM LOAD RATINGS ON OUTRIGGERS Retracted and Down 360°

Radius (ft)	17.3 ft BOOM		29 ft BOOM		40 ft BOOM		50 ft BOOM	
	Boom Angle (deg)	Rated Load (lb)	Boom Angle (deg)	Rated Load (lb)	Boom Angle (deg)	Rated Load (lb)	Boom Angle (deg)	Rated Load (lb)
6	64.5	30,000	—	—	—	—	—	—
8	56.5	25,760	—	—	—	—	—	—
10	47	18,600	67	16,950	—	—	—	—
12	36	13,400	62.5	13,300	—	—	—	—
14.2	0	10,000	57.5	10,400	67.5	9970	—	—
16	—	—	53	8550	65	8500	—	—
18	—	—	47.5	7050	61.5	7150	68.5	6950
20	—	—	41	5920	58	6030	66	5910
22	—	—	34	5040	54.5	5160	63	5060
24	—	—	25	4330	51	4450	60.5	4390
25.9	—	—	0	3780	47	3900	58	3860
28	—	—	—	—	42.5	3390	55	3370
30	—	—	—	—	38	2980	52	2970
32	—	—	—	—	32.5	2630	49	2630
34	—	—	—	—	25.5	2330	45.5	2340
36	—	—	—	—	16	2060	42	2080
36.9	—	—	—	—	0	1960	40.5	1970
38	—	—	—	—	—	—	38	1850
40	—	—	—	—	—	—	34	1650
42	—	—	—	—	—	—	29	1470
44	—	—	—	—	—	—	23	1310
46.9	—	—	—	—	—	—	0	1100



1) The rated loads are the maximum lift capacities as determined by operating radius, boom length and boom angle. The operating radius is the horizontal distance from a projection of the axis of rotation to the supporting surface, before loading, to the center of vertical hoist line or tackle with load applied.

2) The rated loads shown on outriggers do not exceed 85% of actual tipping. The rated loads shown on rubber do not exceed 75% of actual tipping. Retracted outrigger loads meet ASME B30.5-2011. These ratings are based on freely suspended loads with the crane leveled, standing on a firm, uniform supporting surface. Practical working loads depend on supporting surface, operating radius and other factors affecting stability. Hazardous surroundings, climatic conditions, experience of personnel and proper training must all be taken into account by the operator.

3) The weights of all load handling devices such as hooks, hook blocks, slings, etc., except the hoist rope, shall be considered part of the load. See above.

4) Ratings on outriggers are for either outriggers fully extended and down or fully retracted and down. Ratings for outriggers fully retracted and down will apply for any intermediate outrigger setting.

5) Ratings on rubber depend on 12.00R20 tire capacity, condition of tires and proper inflation pressure (130 psi). Loads on rubber may be transported at a maximum speed of 2.5 mph on a smooth, hard, level surface with boom retracted to the shortest length possible and centered over front. Do not use jib with crane on rubber.

6) For operating radius not shown, use load rating of next larger radius.

7) The maximum deck load only is 20,000 lb. Combined boom and deck loads are not permitted on rubber.

8) Do not induce any external side loads to boom or jib.

**NOTES:**  
SHADED AREAS ARE GOVERNED BY  
STRUCTURAL STRENGTH, DO NOT RELY ON  
TIPPING.

OPERATION OF THIS EQUIPMENT IN EXCESS  
OF RATING CHARTS AND DISREGARD OF  
INSTRUCTIONS IS DANGEROUS AND VOIDS  
WARRANTY.



# Load chart imperial

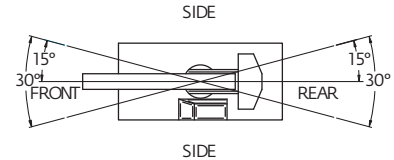
MAIN BOOM ON RUBBER		
Any Boom Length		
Radius (ft)	Front Rating (lb)	360° Rating (lb)
6	17,800	15,550
8	14,350	11,500
10	11,450	8950
12	9790	7420
14.2	8170	6030
16	7020	5350
18	6210	4450
20	5540	3670
22	4830	3050
24	4160	2640
25.9	3630	2220
28	3280	1960
30	2910	1650
32	2600	1400
34	2320	1170
36	2080	990
36.9	1980	900
38	1900	820
40	1700	670
42	1520	510
44	1370	420
46.9	1160	—

## NOTES:

JIB CAPACITY IS LIMITED BY BOTH STRUCTURAL CAPACITY CHART AND MAIN CAPACITY CHART.

SHADED AREAS ARE GOVERNED BY STRUCTURAL STRENGTH, DO NOT RELY ON TIPPING.

OPERATION OF THIS EQUIPMENT IN EXCESS OF RATING CHARTS AND DISREGARD OF INSTRUCTIONS IS DANGEROUS AND VOIDS WARRANTY.



15 FT FIXED JIB CAPACITIES ON EXTENDED OUTRIGGERS						
Main Boom Angle (deg)	Jib Offset Angle					
	0 deg		15 deg		30 deg	
	To 40 ft Main Boom	To 50 ft Main Boom	To 40 ft Main Boom	To 50 ft Main Boom	To 40 ft Main Boom	To 50 ft Main Boom
69	7500	7020	5480	5280	3950	3950
65	7180	5670	4890	4510	3690	3690
60	6000	4770	4440	3940	3510	3510
55	5180	4130	4100	3520	3400	3210
50	4580	3440	3830	3170	3220	2970
45	4040	2860	3620	2680	3130	2580
40	3490	2440	3270	2320	3070	2250
35	3080	2120	2930	2040	2860	2000
30	2770	1890	2660	1830	2630	1810
25	2540	1710	2470	1670	—	—
20	2370	1570	2320	1550	—	—
15	2240	1480	2220	1460	—	—
10	2160	1410	—	—	—	—
5	2120	1380	—	—	—	—
0	2110	1370	—	—	—	—

1) The rated loads are the maximum lift capacities as determined by operating radius, boom length and boom angle. The operating radius is the horizontal distance from a projection of the axis of rotation to the supporting surface, before loading, to the center of vertical hoist line or tackle with load applied.

2) The rated loads shown on outriggers do not exceed 85% of actual tipping. The rated loads shown on rubber do not exceed 75% of actual tipping. Retracted outrigger loads meet ASME B30.5-2011. These ratings are based on freely suspended loads with the crane leveled, standing on a firm, uniform supporting surface. Practical working loads depend on supporting surface, operating radius and other factors affecting stability. Hazardous surroundings, climatic conditions, experience of personnel and proper training must all be taken into account by the operator.

3) The weights of all load handling devices such as hooks, hook blocks, slings, etc., except the hoist rope, shall be considered part of the load. See above.

4) Ratings on outriggers are for either outriggers fully extended and down or fully retracted and down. Ratings for outriggers fully retracted and down will apply for any intermediate outrigger setting.

5) Ratings on rubber depend on 12.00R20 tire capacity, condition of tires and proper inflation pressure (130 psi). Loads on rubber may be transported at a maximum speed of 2.5 mph on a smooth, hard, level surface with boom retracted to the shortest length possible and centered over front. Do not use jib with crane on rubber.

6) For operating radius not shown, use load rating of next larger radius.

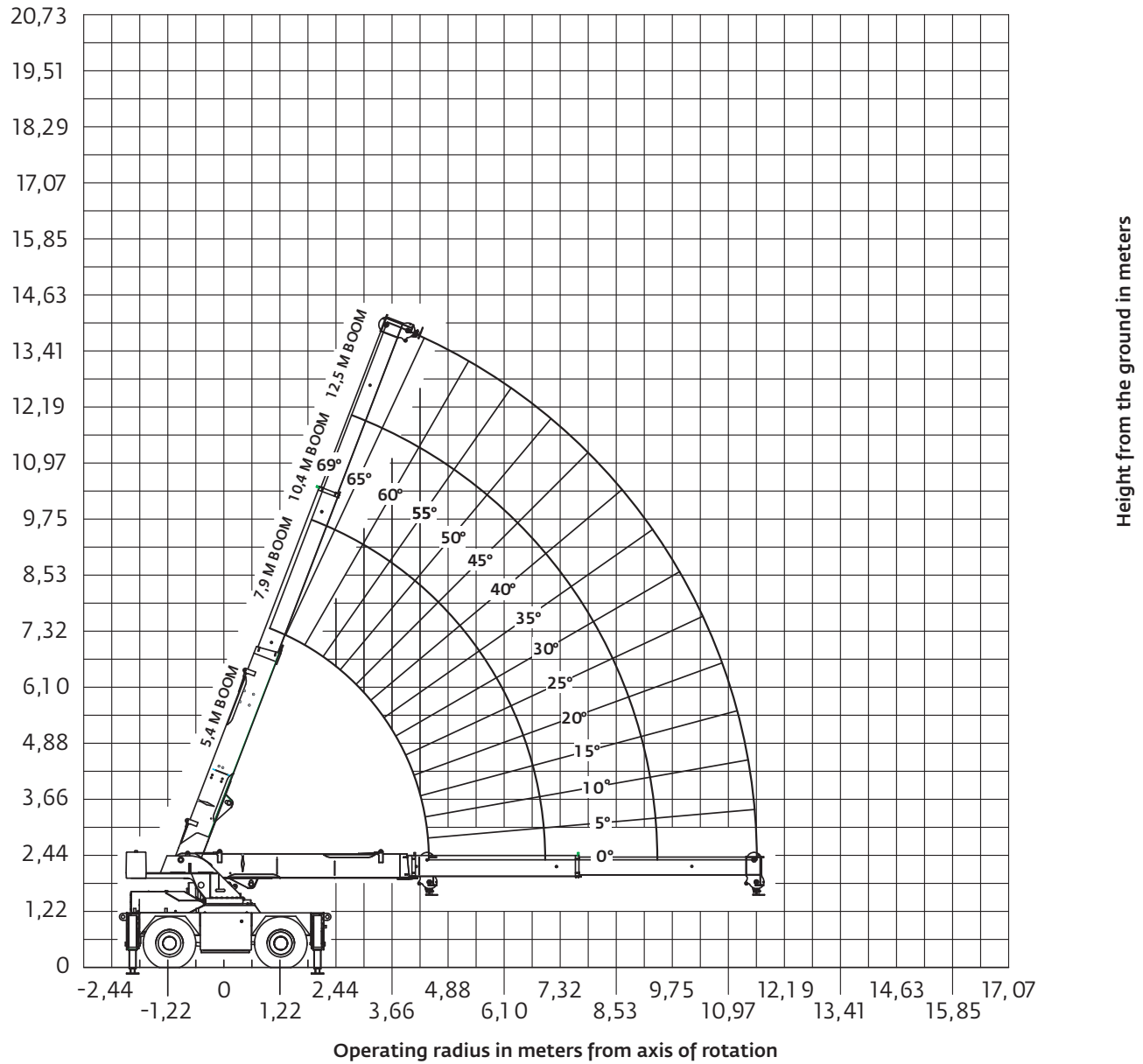
7) The maximum deck load only is 20,000 lb. Combined boom and deck loads are not permitted on rubber.

8) Do not induce any external side loads to boom or jib.

THIS CHART IS ONLY A GUIDE AND SHOULD NOT BE USED TO OPERATE THE CRANE.  
The individual crane's load chart, operating instructions and other instructional plates must be read and understood prior to operating the crane.

# Working range metric

Working range: 5,5 m -12,5 m boom (standard)

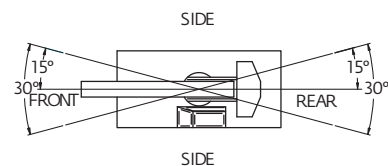


THIS CHART IS ONLY A GUIDE AND SHOULD NOT BE USED TO OPERATE THE CRANE.  
The individual crane's load chart, operating instructions and other instructional plates must be read and understood prior to operating the crane.

# Load chart metric

MAIN BOOM LOAD RATINGS ON OUTRIGGERS Extended and Down 360° or Retracted and Down Front/Rear								
Radius (m)	5.4 m BOOM		7.9 m BOOM		10.4 m BOOM		12.5 m BOOM	
	Boom Angle (deg)	Rated Load (kg)	Boom Angle (deg)	Rated Load (kg)	Boom Angle (deg)	Rated Load (kg)	Boom Angle (deg)	Rated Load (kg)
1,8	65	13 600	—	—	—	—	—	—
2,4	57,5	12 175	69	11 975	—	—	—	—
3,0	49	9850	64	9525	—	—	—	—
3,7	36,5	8050	58	7925	66,5	7700	—	—
4,3	20,5	6800	52,5	6750	63	6350	68,5	6050
4,5	0	6125	51	6125	61,5	6000	67,5	5925
4,9	—	—	46,5	5550	59	5600	65,5	5625
5,5	—	—	39,5	4975	54,5	5075	62	5125
6,1	—	—	31,5	4150	50,5	4325	59	4375
6,7	—	—	19,5	3350	45,5	3750	55,5	3825
7,0	—	—	0	3125	43,5	3500	54	3515
7,3	—	—	—	—	40,5	3200	52	3325
7,9	—	—	—	—	34,5	2700	48	2925
8,5	—	—	—	—	27,5	2400	44	2600
9,1	—	—	—	—	17,5	2025	40	2320
9,4	—	—	—	—	0	1850	37,5	2200
9,8	—	—	—	—	—	—	34	2090
10,4	—	—	—	—	—	—	28	1890
11,0	—	—	—	—	—	—	20,5	1720
11,6	—	—	—	—	—	—	0	1570

MAIN BOOM LOAD RATINGS ON OUTRIGGERS Retracted and Down 360°								
Radius (m)	5,4 m BOOM		7,9 m BOOM		10,4 m BOOM		12,5 m BOOM	
	Boom Angle (deg)	Rated Load (kg)	Boom Angle (deg)	Rated Load (kg)	Boom Angle (deg)	Rated Load (kg)	Boom Angle (deg)	Rated Load (kg)
1,8	65	11 775	—	—	—	—	—	—
2,4	57,5	8840	69	8130	—	—	—	—
3,0	49	6180	64	5480	—	—	—	—
3,7	36,5	4410	58	4500	66,5	4300	—	—
4,3	20,5	3350	52,5	3500	63	3480	68,5	3370
4,5	0	3080	51	3080	61,5	3100	67,5	3100
4,9	—	—	46,5	2790	59	2860	65,5	2810
5,5	—	—	39,5	2280	54,5	2350	62	2380
6,1	—	—	31,5	1900	50,5	1970	59	2000
6,7	—	—	19,5	1600	45,5	1670	55,5	1710
7,0	—	—	0	1480	43,5	1560	54	1610
7,3	—	—	—	—	40,5	1430	52	1470
7,9	—	—	—	—	34,5	1230	48	1270
8,5	—	—	—	—	27,5	1070	44	1110
9,1	—	—	—	—	17,5	940	40	970
9,4	—	—	—	—	0	885	37,5	860
9,8	—	—	—	—	—	—	34	850
10,4	—	—	—	—	—	—	28	740
11,0	—	—	—	—	—	—	20,5	660
11,6	—	—	—	—	—	—	0	580



1) The rated loads are the maximum lift capacities as determined by operating radius, boom length and boom angle. The operating radius is the horizontal distance from a projection of the axis of rotation to the supporting surface, before loading, to the center of vertical hoist line or tackle with load applied.

2) The rated loads shown on outriggers do not exceed 85% of actual tipping. The rated loads shown on rubber do not exceed 75% of actual tipping. Retracted outrigger loads meet ASME B30.5-2011. These ratings are based on freely suspended loads with the crane leveled, standing on a firm, uniform supporting surface. Practical working loads depend on supporting surface, operating radius and other factors affecting stability. Hazardous surroundings, climatic conditions, experience of personnel and proper training must all be taken into account by the operator.

3) The weights of all load handling devices such as hooks, hook blocks, slings, etc., except the hoist rope, shall be considered part of the load. See above.

4) Ratings on outriggers are for either outriggers fully extended and down or fully retracted and down. Ratings for outriggers fully retracted and down will apply for any intermediate outrigger setting.

5) Ratings on rubber depend on 12.00R20 tire capacity, condition of tires and proper inflation pressure (8,9 bar). Loads on rubber may be transported at a maximum speed of 4,0 km/h on a smooth, hard, level surface with boom retracted to the shortest length possible and centered over front. Do not use jib with crane on rubber.

6) For operating radius not shown, use load rating of next larger radius.

7) The maximum deck load only is 7260 kg. Combined boom and deck loads are not permitted on rubber.

8) Do not induce any external side loads to boom or jib.

**NOTES:**  
SHADED AREAS ARE GOVERNED BY  
STRUCTURAL STRENGTH, DO NOT RELY ON  
TIPPING.

**OPERATION OF THIS EQUIPMENT IN EXCESS  
OF RATING CHARTS AND DISREGARD OF  
INSTRUCTIONS IS DANGEROUS AND VOIDS  
WARRANTY.**

# Load chart metric

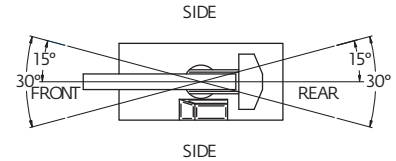
MAIN BOOM ON RUBBER		
Any Boom Length		
Radius (m)	Front Rating (kg)	360° Rating (kg)
1,8	8070	7100
2,4	6620	5170
3,0	5350	4400
3,7	4330	3890
4,3	3630	3040
4,5	3400	2600
4,9	3140	2440
5,5	2540	1990
6,1	2140	1640
6,7	1790	1390
7,0	1650	1290
7,3	1490	1170
7,9	1290	1020
8,5	1140	890
9,1	1040	790
9,4	950	740
9,8	920	690
10,4	850	620
11,0	750	570
11,6	650	490

## NOTES:

JIB CAPACITY IS LIMITED BY BOTH STRUCTURAL CAPACITY CHART AND MAIN CAPACITY CHART.

SHADED AREAS ARE GOVERNED BY STRUCTURAL STRENGTH, DO NOT RELY ON TIPPING.

OPERATION OF THIS EQUIPMENT IN EXCESS OF RATING CHARTS AND DISREGARD OF INSTRUCTIONS IS DANGEROUS AND VOIDS WARRANTY.



1) The rated loads are the maximum lift capacities as determined by operating radius, boom length and boom angle. The operating radius is the horizontal distance from a projection of the axis of rotation to the supporting surface, before loading, to the center of vertical hoist line or tackle with load applied.

2) The rated loads shown on outriggers do not exceed 85% of actual tipping. The rated loads shown on rubber do not exceed 75% of actual tipping. Retracted outrigger loads meet ASME B30.5-2011. These ratings are based on freely suspended loads with the crane leveled, standing on a firm, uniform supporting surface. Practical working loads depend on supporting surface, operating radius and other factors affecting stability. Hazardous surroundings, climatic conditions, experience of personnel and proper training must all be taken into account by the operator.

3) The weights of all load handling devices such as hooks, hook blocks, slings, etc., except the hoist rope, shall be considered part of the load. See above.

4) Ratings on outriggers are for either outriggers fully extended and down or fully retracted and down. Ratings for outriggers fully retracted and down will apply for any intermediate outrigger setting.

5) Ratings on rubber depend on 12.00R20 tire capacity, condition of tires and proper inflation pressure (8,9 bar). Loads on rubber may be transported at a maximum speed of 4,0 km/h on a smooth, hard, level surface with boom retracted to the shortest length possible and centered over front. Do not use jib with crane on rubber.

6) For operating radius not shown, use load rating of next larger radius.

7) The maximum deck load only is 7260 kg. Combined boom and deck loads are not permitted on rubber.

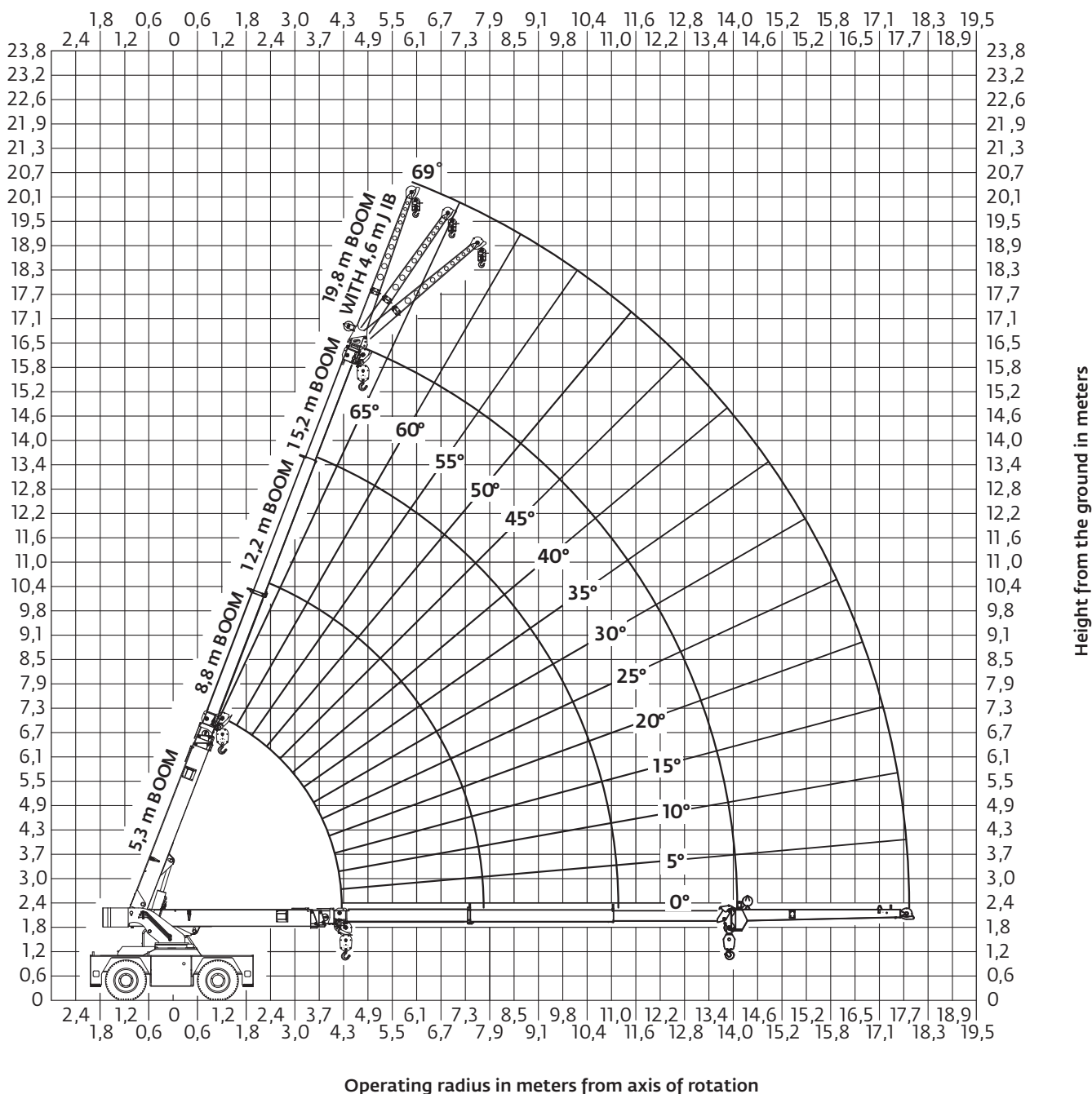
8) Do not induce any external side loads to boom or jib.

THIS CHART IS ONLY A GUIDE AND SHOULD NOT BE USED TO OPERATE THE CRANE.

The individual crane's load chart, operating instructions and other instructional plates must be read and understood prior to operating the crane.

# Working range metric

Working range: 5,4 m - 15,4 m (optional)



THIS CHART IS ONLY A GUIDE AND SHOULD NOT BE USED TO OPERATE THE CRANE.  
The individual crane's load chart, operating instructions and other instructional plates must be read and understood prior to operating the crane.

# Load chart metric

MAIN BOOM LOAD RATINGS ON OUTRIGGERS Extended and Down 360° or Retracted and Down Front/Rear								
Radius (m)	5,3 m BOOM		8,8 m BOOM		12,2 m BOOM		15,2 m BOOM	
	Boom Angle (deg)	Rated Load (kg)	Boom Angle (deg)	Rated Load (kg)	Boom Angle (deg)	Rated Load (kg)	Boom Angle (deg)	Rated Load (kg)
1,8	65	13 600	—	—	—	—	—	—
2,4	57	11 680	—	—	—	—	—	—
3,0	48	9640	67,5	7685	—	—	—	—
3,7	35	8180	62,5	7685	—	—	—	—
4,3	0	5940	57,5	7025	68	7030	—	—
4,9	—	—	52,5	5630	64,5	5630	—	—
5,5	—	—	47	4980	61,5	4980	68,5	4980
6,1	—	—	41	4450	58	4445	66	4455
6,7	—	—	34	3900	54,5	3930	63	3940
7,3	—	—	25	3350	51	3390	60,5	3400
7,9	—	—	0	2930	47	2980	58	3000
8,5	—	—	—	—	43	2610	55	2630
9,1	—	—	—	—	38	2320	52	2340
9,8	—	—	—	—	32	2045	48,5	2095
10,4	—	—	—	—	25	1865	45,5	1885
11,0	—	—	—	—	15,5	1680	42	1680
11,2	—	—	—	—	0	1640	40,5	1625
11,6	—	—	—	—	—	—	38	1545
12,2	—	—	—	—	—	—	34	1375
12,8	—	—	—	—	—	—	29	1250
13,4	—	—	—	—	—	—	23,5	1090
14,3	—	—	—	—	—	—	0	995

1) The rated loads are the maximum lift capacities as determined by operating radius, boom length and boom angle. The operating radius is the horizontal distance from a projection of the axis of rotation to the supporting surface, before loading, to the center of vertical hoist line or tackle with load applied.

2) The rated loads shown on outriggers do not exceed 85% of actual tipping. The rated loads shown on rubber do not exceed 75% of actual tipping. Retracted outrigger loads meet ASME B30.5-2011. These ratings are based on freely suspended loads with the crane leveled, standing on a firm, uniform supporting surface. Practical working loads depend on supporting surface, operating radius and other factors affecting stability. Hazardous surroundings, climatic conditions, experience of personnel and proper training must all be taken into account by the operator.

3) The weights of all load handling devices such as hooks, hook blocks, slings, etc., except the hoist rope, shall be considered part of the load. See above.

4) Ratings on outriggers are for either outriggers fully extended and down or fully retracted and down. Ratings for outriggers fully retracted and down will apply for any intermediate outrigger setting.

5) Ratings on rubber depend on 12.00R20 tire capacity, condition of tires and proper inflation pressure (8,9 bar). Loads on rubber may be transported at a maximum speed of 4,0 km/h on a smooth, hard, level surface with boom retracted to the shortest length possible and centered over front. Do not use jib with crane on rubber.

6) For operating radius not shown, use load rating of next larger radius.

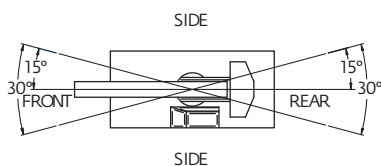
7) The maximum deck load only is 7260 kg. Combined boom and deck loads are not permitted on rubber.

8) Do not induce any external side loads to boom or jib.

**NOTES:**  
SHADED AREAS ARE GOVERNED BY STRUCTURAL STRENGTH, DO NOT RELY ON TIPPING.

OPERATION OF THIS EQUIPMENT IN EXCESS OF RATING CHARTS AND DISREGARD OF INSTRUCTIONS IS DANGEROUS AND VOIDS WARRANTY.

MAIN BOOM LOAD RATINGS ON OUTRIGGERS Retracted and Down 360°								
Radius (m)	5,3 m BOOM		8,8 m BOOM		12,2 m BOOM		15,2 m BOOM	
	Boom Angle (deg)	Rated Load (kg)	Boom Angle (deg)	Rated Load (kg)	Boom Angle (deg)	Rated Load (kg)	Boom Angle (deg)	Rated Load (kg)
1,8	65	13 600	—	—	—	—	—	—
2,4	57	11 685	—	—	—	—	—	—
3,0	48	8430	67,5	7685	—	—	—	—
3,7	35	5955	62,5	5955	—	—	—	—
4,3	0	4585	57,5	4770	68	4565	—	—
4,9	—	—	52,5	3850	64,5	3830	—	—
5,5	—	—	47	3185	61,5	3230	68,5	3140
6,1	—	—	41	2680	58	2735	66	2675
6,7	—	—	34	2290	54,5	2345	63	2300
7,3	—	—	25	1970	51	2025	60,5	1995
7,9	—	—	0	1715	47	1770	58	1750
8,5	—	—	—	—	43	1550	55	1540
9,1	—	—	—	—	38	1365	52	1360
9,8	—	—	—	—	32	1185	48,5	1185
10,4	—	—	—	—	25	1050	45,5	1055
11,0	—	—	—	—	15,5	930	42	940
11,2	—	—	—	—	0	895	40,5	905
11,6	—	—	—	—	—	—	38	835
12,2	—	—	—	—	—	—	34	745
12,8	—	—	—	—	—	—	29	665
13,4	—	—	—	—	—	—	23,5	595
14,3	—	—	—	—	—	—	0	500



THIS CHART IS ONLY A GUIDE AND SHOULD NOT BE USED TO OPERATE THE CRANE.  
The individual crane's load chart, operating instructions and other instructional plates must be read and understood prior to operating the crane.

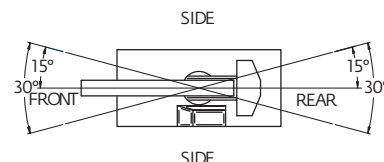
# Load chart metric

MAIN BOOM ON RUBBER		
Any Boom Length		
Radius (m)	Front Rating (kg)	360° Rating (kg)
1,8	8090	7070
2,4	6525	5230
3,0	5210	4060
3,7	4440	3365
4,3	3705	2760
4,9	3185	2425
5,5	2820	2015
6,1	2510	1665
6,7	2190	1380
7,3	1890	1195
7,9	1645	1005
8,5	1495	885
9,1	1330	745
9,8	1165	635
10,4	1045	530
11,0	940	445
11,2	905	405
11,6	855	370
12,2	770	300
12,8	690	230
13,4	620	190
14,3	525	–

NOTES:  
JIB CAPACITY IS LIMITED BY BOTH STRUCTURAL CAPACITY CHART AND MAIN CAPACITY CHART.

SHADED AREAS ARE GOVERNED BY STRUCTURAL STRENGTH, DO NOT RELY ON TIPPING.

OPERATION OF THIS EQUIPMENT IN EXCESS OF RATING CHARTS AND DISREGARD OF INSTRUCTIONS IS DANGEROUS AND Voids WARRANTY.



4,6 m FIXED JIB CAPACITIES ON EXTENDED OUTRIGGERS						
Main Boom Angle (deg)	Jib Offset Angle					
	0°		15°		30°	
	To 12,2 m Main Boom	To 15,2 m Main Boom	To 12,2 m Main Boom	To 15,2 m Main Boom	To 12,2 m Main Boom	To 15,2 m Main Boom
69	3400	3180	2485	2395	1790	1790
65	3255	2570	2215	2045	1670	1670
60	2720	2160	2010	1785	1590	1590
55	2350	1870	1860	1595	1540	1455
50	2075	1560	1735	1435	1460	1345
45	1830	1295	1640	1210	1420	1170
40	1580	1105	1480	1050	1390	1020
35	1395	960	1325	925	1295	900
30	1250	850	1205	830	1195	820
25	1150	775	1120	750	–	–
20	1075	710	1050	700	–	–
15	1015	670	1005	660	–	–
10	980	640	–	–	–	–
5	960	625	–	–	–	–
0	955	620	–	–	–	–

1) The rated loads are the maximum lift capacities as determined by operating radius, boom length and boom angle. The operating radius is the horizontal distance from a projection of the axis of rotation to the supporting surface, before loading, to the center of vertical hoist line or tackle with load applied.

2) The rated loads shown on outriggers do not exceed 85% of actual tipping. The rated loads shown on rubber do not exceed 75% of actual tipping. Retracted outrigger loads meet ASME B30.5-2011. These ratings are based on freely suspended loads with the crane leveled, standing on a firm, uniform supporting surface. Practical working loads depend on supporting surface, operating radius and other factors affecting stability. Hazardous surroundings, climatic conditions, experience of personnel and proper training must all be taken into account by the operator.

3) The weights of all load handling devices such as hooks, hook blocks, slings, etc., except the hoist rope, shall be considered part of the load. See above.

4) Ratings on outriggers are for either outriggers fully extended and down or fully retracted and down. Ratings for outriggers fully retracted and down will apply for any intermediate outrigger setting.

5) Ratings on rubber depend on 12.00R20 tire capacity, condition of tires and proper inflation pressure (8,9 bar). Loads on rubber may be transported at a maximum speed of 4,0 km/h on a smooth, hard, level surface with boom retracted to the shortest length possible and centered over front. Do not use jib with crane on rubber.

6) For operating radius not shown, use load rating of next larger radius.

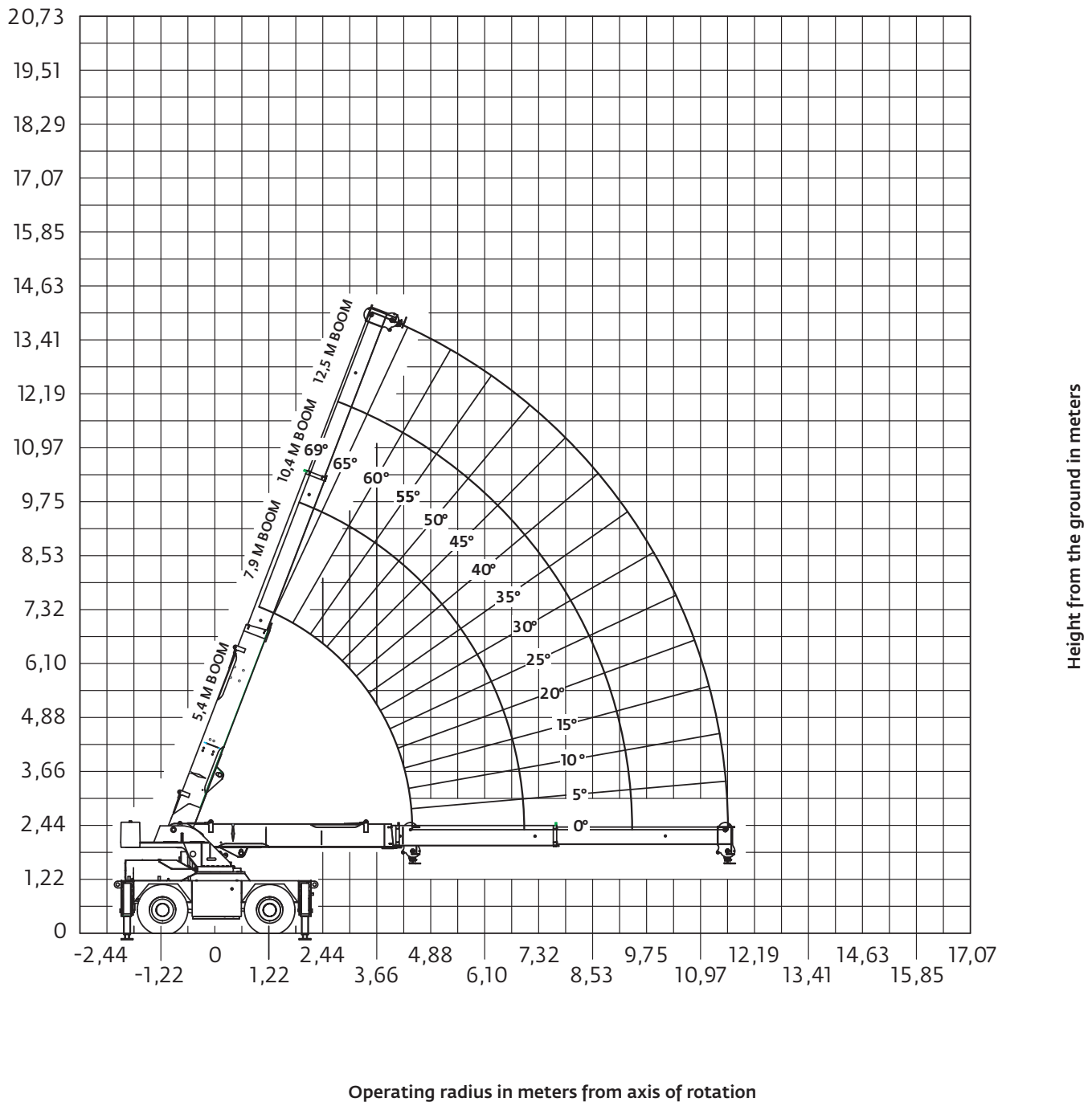
7) The maximum deck load only is 7260 kg. Combined boom and deck loads are not permitted on rubber.

8) Do not induce any external side loads to boom or jib.



# Working range DIN/ISO

Working range: 5,5 m -12,5 m boom (standard)



THIS CHART IS ONLY A GUIDE AND SHOULD NOT BE USED TO OPERATE THE CRANE.  
The individual crane's load chart, operating instructions and other instructional plates must be read and understood prior to operating the crane.

# Load chart DIN/ISO

MAIN BOOM LOAD RATINGS ON OUTRIGGERS Extended and Down 360° or Retracted and Down Front/Rear								
Radius (m)	5,4 m BOOM		7,7 m BOOM		10,4 m BOOM		12,5 m BOOM	
	Boom Angle (deg)	Rated Load (kg)	Boom Angle (deg)	Rated Load (kg)	Boom Angle (deg)	Rated Load (kg)	Boom Angle (deg)	Rated Load (kg)
1,8	65	13 600	—	—	—	—	—	—
2,4	57,5	13 523	69	12 100	—	—	—	—
3,0	49	11 850	64	10 850	—	—	—	—
3,7	36,5	10 500	58	9 680	66,5	9 115	—	—
4,3	20,5	8 980	52,5	8 750	63	8 210	68,5	7 890
4,5	0	7 390	51	8 460	61,5	7 935	67,5	7 620
4,9	—	—	46,5	7 745	59	7 320	65,5	6 985
5,5	—	—	39,5	6 300	54,5	6 235	62	5 980
6,1	—	—	31,5	5 270	50,5	5 330	59	5 210
6,7	—	—	19,5	4 495	45,5	4 565	55,5	4 590
7,0	—	—	0	4 210	43,5	4 280	54	4 305
7,3	—	—	—	—	40,5	3 970	52	3 995
7,9	—	—	—	—	34,5	3 500	48	3 525
8,5	—	—	—	—	27,5	3 115	44	3 145
9,1	—	—	—	—	17,5	2 790	40	2 825
9,4	—	—	—	—	0	2 645	37,5	2 680
9,8	—	—	—	—	—	—	34	2 515
10,4	—	—	—	—	—	—	28	2 285
11,0	—	—	—	—	—	—	20,5	2 085
11,6	—	—	—	—	—	—	0	1 925

MAIN BOOM LOAD RATINGS ON OUTRIGGERS Retracted and Down 360°								
Radius (m)	5,4 m BOOM		7,9 m BOOM		10,4 m BOOM		12,5 m BOOM	
	Boom Angle (deg)	Rated Load (kg)	Boom Angle (deg)	Rated Load (kg)	Boom Angle (deg)	Rated Load (kg)	Boom Angle (deg)	Rated Load (kg)
1,8	65	13 600	—	—	—	—	—	—
2,4	57,5	11 125	69	9 955	—	—	—	—
3,0	49	8 050	64	7 395	—	—	—	—
3,7	36,5	5 860	58	5 625	66,5	5 305	—	—
4,3	20,5	4 515	52,5	4 620	63	4 405	68,5	4 215
4,5	0	4 210	51	4 375	61,5	4 185	67,5	4 015
4,9	—	—	46,5	3 845	59	3 735	65,5	3 600
5,5	—	—	39,5	3 185	54,5	3 215	62	3 120
6,1	—	—	31,5	2 685	50,5	2 735	59	2 735
6,7	—	—	19,5	2 295	45,5	2 360	55,5	2 420
7,0	—	—	0	2 145	43,5	2 215	54	2 290
7,3	—	—	—	—	40,5	2 060	52	2 130
7,9	—	—	—	—	34,5	1 815	48	1 875
8,5	—	—	—	—	27,5	1 605	44	1 665
9,1	—	—	—	—	17,5	1 430	40	1 490
9,4	—	—	—	—	0	1 350	37,5	1 405
9,8	—	—	—	—	—	—	34	1 310
10,4	—	—	—	—	—	—	28	1 180
11,0	—	—	—	—	—	—	20,5	1 065
11,6	—	—	—	—	—	—	0	975

1) The rated loads are the maximum lift capacities as determined by operating radius, boom length and boom angle. The operating radius is the horizontal distance from a projection of the axis of rotation to the supporting surface, before loading, to the center of vertical hoist line or tackle with load applied.

2) The rated loads shown on outriggers do not exceed 80% of actual tipping. The rated loads shown on rubber do not exceed 75% of actual tipping. These ratings are based on freely suspended loads with the crane leveled, standing on a firm, uniform supporting surface. Practical working loads depend on supporting surface, operating radius and other factors affecting stability. Hazardous surroundings, climatic conditions, experience of personnel and proper training must all be taken into account by the operator.

3) The weights of all load handling devices such as hooks, hook blocks, slings, etc., except the hoist rope, shall be considered part of the load. See above.

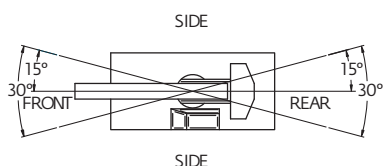
4) Ratings on outriggers are for either outriggers fully extended and down or fully retracted and down. Ratings for outriggers fully retracted and down will apply for any intermediate outrigger setting.

5) Ratings on rubber depend on 12.00R20 tire capacity, condition of tires and proper inflation pressure (8,9 bar). Loads on rubber may be transported at a maximum speed of 4,0 km/h on a smooth, hard, level surface with boom retracted to the shortest length possible and centered over front. Do not use jib with crane on rubber.

6) For operating radius not shown, use load rating of next larger radius.

7) The maximum deck load only is 7260 kg. Combined boom and deck loads are not permitted on rubber.

8) Do not induce any external side loads to boom or jib.



# Load chart DIN/ISO

MAIN BOOM ON RUBBER		
Any Boom Length		
Radius (m)	Front Rating (kg)	360° Rating (kg)
1,8	8070	7115
2,4	6620	5190
3,0	5350	4410
3,7	4330	3765
4,3	3630	2970
4,5	3425	2780
4,9	3165	2570
5,5	2630	2145
6,1	2225	1820
6,7	1905	1565
7,0	1785	1465
7,3	1705	1400
7,9	1500	1225
8,5	1330	1075
9,1	1185	950
9,4	1120	890
9,8	1060	825
10,4	950	735
11,0	855	650
11,6	775	585

## NOTES:

JIB CAPACITY IS LIMITED BY BOTH STRUCTURAL CAPACITY CHART AND MAIN CAPACITY CHART.

SHADED AREAS ARE GOVERNED BY STRUCTURAL STRENGTH, DO NOT RELY ON TIPPING.

OPERATION OF THIS EQUIPMENT IN EXCESS OF RATING CHARTS AND DISREGARD OF INSTRUCTIONS IS DANGEROUS AND Voids WARRANTY.

1) The rated loads are the maximum lift capacities as determined by operating radius, boom length and boom angle. The operating radius is the horizontal distance from a projection of the axis of rotation to the supporting surface, before loading, to the center of vertical hoist line or tackle with load applied.

2) The rated loads shown on outriggers do not exceed 80% of actual tipping. The rated loads shown on rubber do not exceed 75% of actual tipping. These ratings are based on freely suspended loads with the crane leveled, standing on a firm, uniform supporting surface. Practical working loads depend on supporting surface, operating radius and other factors affecting stability. Hazardous surroundings, climatic conditions, experience of personnel and proper training must all be taken into account by the operator.

3) The weights of all load handling devices such as hooks, hook blocks, slings, etc., except the hoist rope, shall be considered part of the load. See above.

4) Ratings on outriggers are for either outriggers fully extended and down or fully retracted and down. Ratings for outriggers fully retracted and down will apply for any intermediate outrigger setting.

5) Ratings on rubber depend on 12.00R20 tire capacity, condition of tires and proper inflation pressure (8,9 bar). Loads on rubber may be transported at a maximum speed of 4,0 km/h on a smooth, hard, level surface with boom retracted to the shortest length possible and centered over front. Do not use jib with crane on rubber.

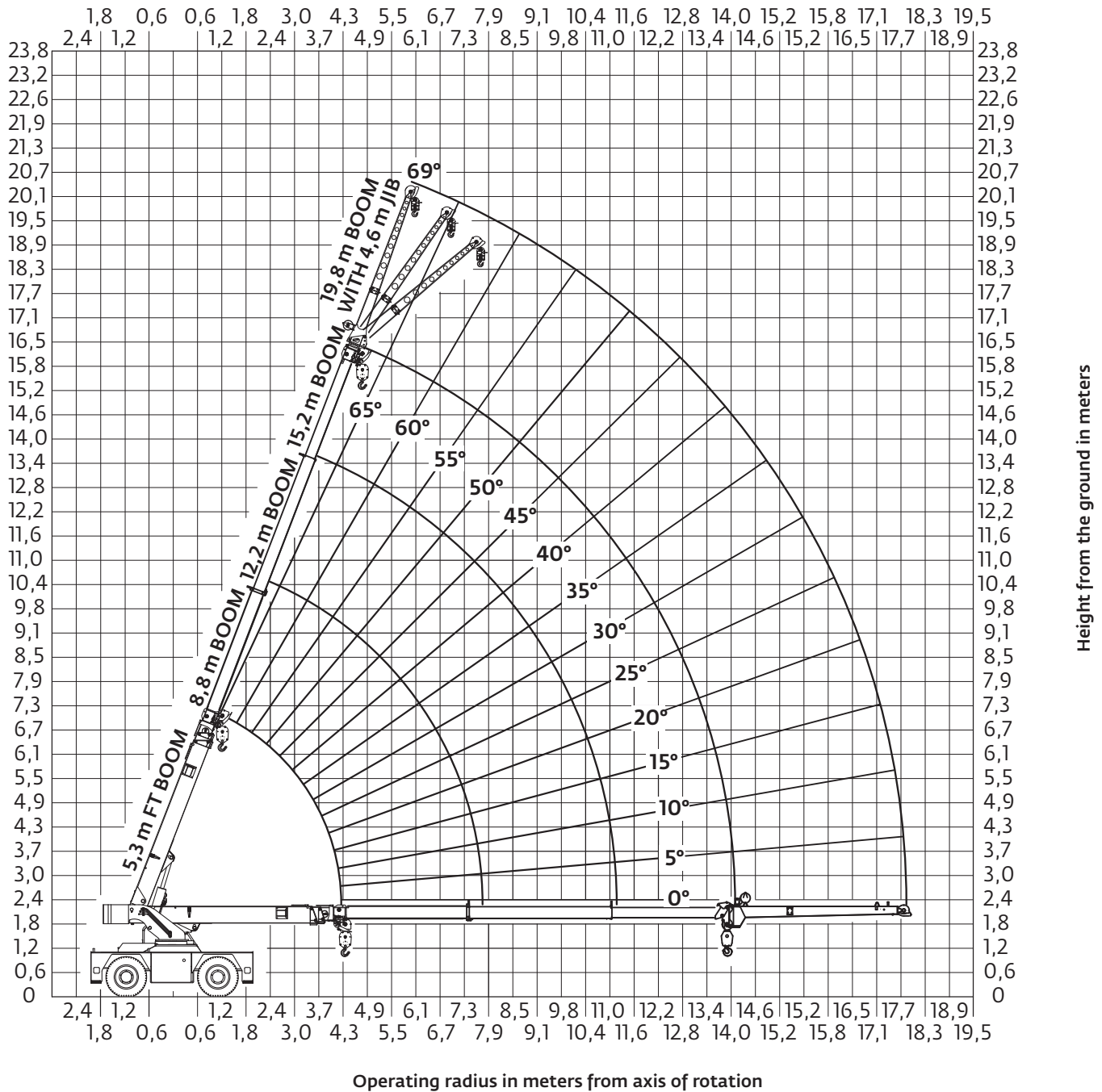
6) For operating radius not shown, use load rating of next larger radius.

7) The maximum deck load only is 7260 kg. Combined boom and deck loads are not permitted on rubber.

8) Do not induce any external side loads to boom or jib.

# Working range DIN/ISO

Working range: 5,4 m - 15,4 m (optional)



THIS CHART IS ONLY A GUIDE AND SHOULD NOT BE USED TO OPERATE THE CRANE.

The individual crane's load chart, operating instructions and other instructional plates must be read and understood prior to operating the crane.

# Load chart DIN/ISO

## MAIN BOOM LOAD RATINGS ON OUTRIGGERS Extended and Down 360° or Retracted and Down Front/Rear

Radius (m)	5,3 m BOOM		8,8 m BOOM		12,2 m BOOM		15,2 m BOOM	
	Boom Angle (deg)	Rated Load (kg)	Boom Angle (deg)	Rated Load (kg)	Boom Angle (deg)	Rated Load (kg)	Boom Angle (deg)	Rated Load (kg)
1,8	65	13 600	—	—	—	—	—	—
2,4	57	13 375	—	—	—	—	—	—
3,0	48	11 725	67,5	7 685	—	—	—	—
3,7	35	10 125	62,5	7 685	—	—	—	—
4,3	0	5940	57,5	7 685	68	7 210	—	—
4,9	—	—	52,5	7 300	64,5	6 575	—	—
5,5	—	—	47	6 335	61,5	5 970	68,5	5 450
6,1	—	—	41	5 285	58	5 175	66	4 905
6,7	—	—	34	4 500	54,5	4 535	63	4 325
7,3	—	—	25	3 885	51	3 925	60,5	3 855
7,9	—	—	0	3 240	47	3 450	58	3 420
8,5	—	—	—	—	43	3 040	55	3 035
9,1	—	—	—	—	38	2 720	52	2 720
9,8	—	—	—	—	32	2 405	48,5	2 415
10,4	—	—	—	—	25	2 175	45,5	2 195
11,0	—	—	—	—	15,5	1 970	42	1 995
11,2	—	—	—	—	0	1 910	40,5	1 935
11,6	—	—	—	—	—	—	38	1 820
12,2	—	—	—	—	—	—	34	1 660
12,8	—	—	—	—	—	—	29	1 525
13,4	—	—	—	—	—	—	23,5	1 400
14,3	—	—	—	—	—	—	0	1 240

1) The rated loads are the maximum lift capacities as determined by operating radius, boom length and boom angle. The operating radius is the horizontal distance from a projection of the axis of rotation to the supporting surface, before loading, to the center of vertical hoist line or tackle with load applied.

2) The rated loads shown on outriggers do not exceed 80% of actual tipping. The rated loads shown on rubber do not exceed 75% of actual tipping. These ratings are based on freely suspended loads with the crane leveled, standing on a firm, uniform supporting surface. Practical working loads depend on supporting surface, operating radius and other factors affecting stability. Hazardous surroundings, climatic conditions, experience of personnel and proper training must all be taken into account by the operator.

3) The weights of all load handling devices such as hooks, hook blocks, slings, etc., except the hoist rope, shall be considered part of the load. See above.

4) Ratings on outriggers are for either outriggers fully extended and down or fully retracted and down. Ratings for outriggers fully retracted and down will apply for any intermediate outrigger setting.

5) Ratings on rubber depend on 12.00R20 tire capacity, condition of tires and proper inflation pressure (8,9 bar). Loads on rubber may be transported at a maximum speed of 4,0 km/h on a smooth, hard, level surface with boom retracted to the shortest length possible and centered over front. Do not use jib with crane on rubber.

6) For operating radius not shown, use load rating of next larger radius.

7) The maximum deck load only is 7260 kg. Combined boom and deck loads are not permitted on rubber.

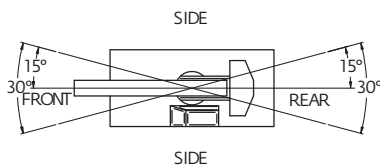
8) Do not induce any external side loads to boom or jib.

**NOTES:**  
SHADED AREAS ARE GOVERNED BY  
STRUCTURAL STRENGTH, DO NOT RELY ON  
TIPPING.

OPERATION OF THIS EQUIPMENT IN EXCESS  
OF RATING CHARTS AND DISREGARD OF  
INSTRUCTIONS IS DANGEROUS AND VOIDS  
WARRANTY.

## MAIN BOOM LOAD RATINGS ON OUTRIGGERS Retracted and Down 360°

Radius (m)	5,3 m BOOM		8,8 m BOOM		12,2 m BOOM		15,2 m BOOM	
	Boom Angle (deg)	Rated Load (kg)	Boom Angle (deg)	Rated Load (kg)	Boom Angle (deg)	Rated Load (kg)	Boom Angle (deg)	Rated Load (kg)
1,8	65	13 600	—	—	—	—	—	—
2,4	57	11 350	—	—	—	—	—	—
3,0	48	81 60	67,5	7 210	—	—	—	—
3,7	35	5 955	62,5	5 480	—	—	—	—
4,3	0	4 585	57,5	4 490	68	4 165	—	—
4,9	—	—	52,5	3 765	64,5	3 525	—	—
5,5	—	—	47	3 185	61,5	3 030	68,5	2 870
6,1	—	—	41	2 680	58	2 630	66	2 505
6,7	—	—	34	2 290	54,5	2 305	63	2 205
7,3	—	—	25	1 970	51	2 025	60,5	1 955
7,9	—	—	0	1 715	47	1 770	58	1 740
8,5	—	—	—	—	43	1 550	55	1 540
9,1	—	—	—	—	38	1 365	52	1 360
9,8	—	—	—	—	32	1 185	48,5	1 185
10,4	—	—	—	—	25	1 050	45,5	1 055
11,0	—	—	—	—	15,5	930	42	940
11,2	—	—	—	—	0	895	40,5	905
11,6	—	—	—	—	—	—	38	835
12,2	—	—	—	—	—	—	34	745
12,8	—	—	—	—	—	—	29	665
13,4	—	—	—	—	—	—	23,5	595
14,3	—	—	—	—	—	—	0	500



THIS CHART IS ONLY A GUIDE AND SHOULD NOT BE USED TO OPERATE THE CRANE.

The individual crane's load chart, operating instructions and other instructional plates must be read and understood prior to operating the crane.

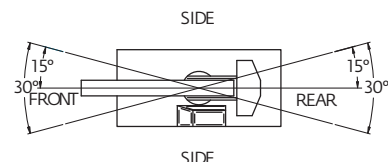
# Load chart DIN/ISO

MAIN BOOM ON RUBBER		
Any Boom Length		
Radius (m)	Front Rating (kg)	360° Rating (kg)
1,8	8090	7070
2,4	6525	5230
3,0	5210	4060
3,7	4440	3365
4,3	3640	2685
4,9	3080	2365
5,5	2620	1945
6,1	2210	1620
6,7	1880	1365
7,3	1615	1160
7,9	1395	990
8,5	1265	885
9,1	1120	745
9,8	975	635
10,4	865	530
11,0	770	445
11,2	740	405
11,6	700	370
12,2	620	300
12,8	550	230
13,4	490	190
14,3	405	—

NOTES:  
JIB CAPACITY IS LIMITED BY BOTH STRUCTURAL CAPACITY CHART AND MAIN CAPACITY CHART.

SHADED AREAS ARE GOVERNED BY STRUCTURAL STRENGTH, DO NOT RELY ON TIPPING.

OPERATION OF THIS EQUIPMENT IN EXCESS OF RATING CHARTS AND DISREGARD OF INSTRUCTIONS IS DANGEROUS AND Voids WARRANTY.



4,6 m FIXED JIB CAPACITIES ON EXTENDED OUTRIGGERS						
Main Boom Angle (deg)	Jib Offset Angle					
	0°		15°		30°	
	To 12,2 m Main Boom	To 15,2 m Main Boom	To 12,2 m Main Boom	To 15,2 m Main Boom	To 12,2 m Main Boom	To 15,2 m Main Boom
69	3400	3180	2485	2395	1790	1790
65	3255	2570	2215	2045	1670	1670
60	2720	2160	2010	1785	1590	1590
55	2350	1870	1860	1595	1540	1455
50	2075	1655	1735	1455	1460	1345
45	1870	1410	1640	1325	1420	1265
40	1715	1240	1540	1180	1390	1145
35	1580	1115	1460	1065	1370	1050
30	1445	1005	1390	975	1360	955
25	1330	915	1305	905	—	—
20	1255	860	1245	855	—	—
15	1205	820	1190	815	—	—
10	1165	785	—	—	—	—
5	1140	770	—	—	—	—
0	1135	765	—	—	—	—

1) The rated loads are the maximum lift capacities as determined by operating radius, boom length and boom angle. The operating radius is the horizontal distance from a projection of the axis of rotation to the supporting surface, before loading, to the center of vertical hoist line or tackle with load applied.

2) The rated loads shown on outriggers do not exceed 80% of actual tipping. The rated loads shown on rubber do not exceed 75% of actual tipping. These ratings are based on freely suspended loads with the crane leveled, standing on a firm, uniform supporting surface. Practical working loads depend on supporting surface, operating radius and other factors affecting stability. Hazardous surroundings, climatic conditions, experience of personnel and proper training must all be taken into account by the operator.

3) The weights of all load handling devices such as hooks, hook blocks, slings, etc., except the hoist rope, shall be considered part of the load. See above.

4) Ratings on outriggers are for either outriggers fully extended and

down or fully retracted and down. Ratings for outriggers fully retracted and down will apply for any intermediate outrigger setting.

5) Ratings on rubber depend on 12.00R20 tire capacity, condition of tires and proper inflation pressure (8,9 bar). Loads on rubber may be transported at a maximum speed of 4,0 km/h on a smooth, hard, level surface with boom retracted to the shortest length possible and centered over front. Do not use jib with crane on rubber.

6) For operating radius not shown, use load rating of next larger radius.

7) The maximum deck load only is 7260 kg. Combined boom and deck loads are not permitted on rubber.

8) Do not induce any external side loads to boom or jib.

THIS CHART IS ONLY A GUIDE AND SHOULD NOT BE USED TO OPERATE THE CRANE.

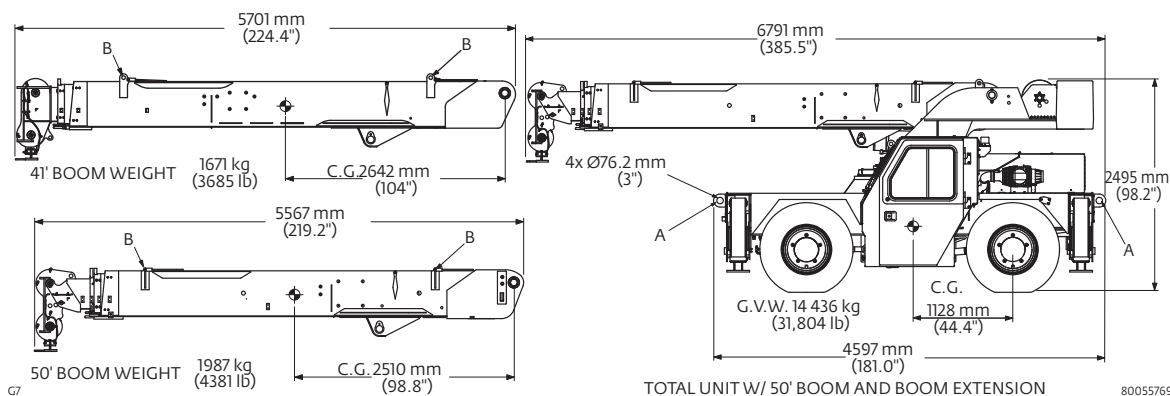
The individual crane's load chart, operating instructions and other instructional plates must be read and understood prior to operating the crane.

# Transportation and lifting data

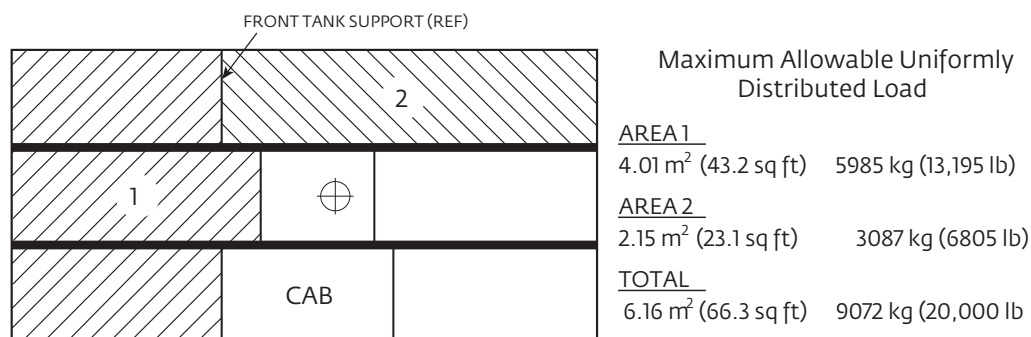
## TRANSPORTATION AND LIFTING DATA - YB5515-2

1. LIFTING OF ENTIRE CRANE OR MAJOR CRANE ASSEMBLIES MUST BE ACCOMPLISHED BY UTILIZING SPECIFIC FITTINGS INDICATED ON ADJACENT CHART. USE OF FITTINGS FOR PURPOSES OTHER THAN THOSE DESIGNATED ON CHART IS PROHIBITED. FITTING CAPACITIES ARE MAXIMUM ALLOWABLE LOADS PER INDIVIDUAL FITTING.
2. RIGGING PERSONNEL SHALL BE RESPONSIBLE FOR PROPER SELECTION AND PLACEMENT OF ALL SLINGS AND LOAD HANDLING DEVICES.
3. DIMENSIONS AND WEIGHTS SHOWN ARE ESTIMATED FOR LARGEST CONFIGURATION AVAILABLE. WEIGHTS DO NOT INCLUDE BOOM EXTENSION AND/OR JIB, UNLESS OTHERWISE INDICATED.
4. RIGGING PERSONNEL SHALL VERIFY DIMENSIONS AS REQUIRED FOR CLEARANCE.
5. DO NOT USE COUNTERWEIGHT LIFT LOCATIONS OR BOOM SLING POINT FOR LIFTING OR TIE DOWN OF ENTIRE CRANE.

FITTING	NO. / UNIT				BOOM	CWT	CAPACITY-TONNES [TONS]				
		LIFT	TOW	TIE DOWN			LIFT	TOW	TIE DOWN		
									FORE & AFT	SIDE	DOWN
A	4	X	X	X			9.1 [10]	27.2 [30]	27.2 [30]	0.9 [1]	27.2 [30]
B	4				X		1.8 [2]				



### LOAD DISTRIBUTION CHART



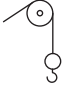
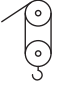
1. Maximum travel speed with any or all loads - 4.0 km/h (2.5 MPH)
2. Loads to be transported on smooth level firm surfaces only.
3. Boom must be retracted and in center forward position.
4. Any combination or total of areas 1 & 2 may be used.
5. Lifting is not permitted when carry deck is loaded except for loading and unloading carry deck.
6. Rated pick and carry loads may be transported on deck area 1 provided the load is cribbed directly on the frame rails.

THIS CHART IS ONLY A GUIDE AND SHOULD NOT BE USED TO OPERATE THE CRANE.

The individual crane's load chart, operating instructions and other instructional plates must be read and understood prior to operating the crane.




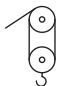
# Rigging chart

RIGGING CHART	
 1-PART 0-7500 lb	 4-PART 0-30,000 lb
WIRE ROPE: 9/16" Diameter 6 X 19 Bright Minimum required breaking strength = 37,000 lb	

MAXIMUM PERMISSIBLE SINGLE LINE PULL = 10,000 LB

RATING REDUCTIONS FOR LOAD HANDLING DEVICES INSTALLED (lb)		
	FROM MAIN BOOM	FROM JIB
MAIN BLOCK	356*	NOT APPLICABLE
HOOK & BALL	105*	105
JIB STOWED	NO REDUCTION	NOT APPLICABLE
15' JIB DEPLOYED	700	NO REDUCTION

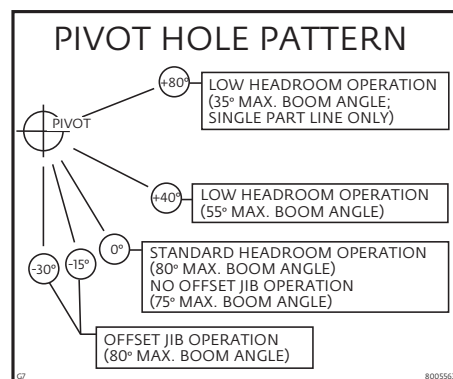
\* Refer to rating plate for actual weight

RIGGING CHART	
 1-PART 0-3400 kg	 4-PART 0-13 610 kg
WIRE ROPE: 14mm Diameter 6 X 19 Bright Minimum required breaking strength = 164.6 kN	

MAXIMUM PERMISSIBLE SINGLE LINE PULL = 4536 kg

RATING REDUCTIONS FOR LOAD HANDLING DEVICES INSTALLED (kg)		
	FROM MAIN BOOM	FROM JIB
MAIN BLOCK	166*	NOT APPLICABLE
HOOK & BALL	40*	40*
JIB STOWED	NO REDUCTION	NOT APPLICABLE
4,6 m JIB DEPLOYED	320	NO REDUCTION

\* Refer to rating plate for actual weight



THIS CHART IS ONLY A GUIDE AND SHOULD NOT BE USED TO OPERATE THE CRANE.  
The individual crane's load chart, operating instructions and other instructional plates must be read and understood prior to operating the crane.

# Symbols glossary



**Axles**



**Counterweight**



**Grade**



**Outriggers**



**Boom**



**Drive**



**Heavy duty jib**



**Radius**



**Boom elevation**



**Electrical system**



**Hoist**



**Rotation**



**Boom extension**



**Engine**



**Hookblock**



**Speed**



**Boom length**



**Extension**



**Hydraulic system**



**Steering**



**Boom nose**



**Frame**



**Lights**



**Suspension**



**Brakes**



**Fuel tank capacity**



**Oil**



**Swing**



**Cab**



**Gear**



**Outrigger controls**



**Tires**



**Transmission**

## Notes



## Manitowoc Cranes

### Regional headquarters

#### Americas

**Manitowoc, Wisconsin, USA**

Tel: +1 920 684 6621

Fax: +1 920 683 6277

**Shady Grove, Pennsylvania, USA**

Tel: +1 717 597 8121

Fax: +1 717 597 4062

#### Europe, Middle East, Africa

**Dardilly, France**

Tel: +33 (0)4 72 18 20 20

Fax: +33 (0)4 72 18 20 00

#### China

**Shanghai, China**

Tel: +86 21 6457 0066

Fax: +86 21 6457 4955

#### Greater Asia-Pacific

**Singapore**

Tel: +65 6264 1188

Fax: +65 6862 4040

### Regional offices

#### Americas

**Brazil**

Alphaville

**Mexico**

Monterrey

**Chile**

Santiago

#### Europe, Middle East, Africa

**France**

Baudemont

Cergy

Decines

**Germany**

Langenfeld

**Italy**

Lainate

**Netherlands**

Breda

**Poland**

Warsaw

**Portugal**

Baltar

**Russia**

Moscow

**South Africa**

Johannesburg

**U.A.E.**

Dubai

**U.K.**

Buckingham

#### China

Beijing

Chengdu

Guangzhou

Xian

#### Greater Asia-Pacific

**Australia**

Brisbane

Melbourne

Sydney

**India**

Chennai

Delhi

Hyderabad

Pune

**Korea**

Seoul

**Philippines**

Makati City

**Singapore**

### Factories

**Brazil**

Passo Fundo

**China**

TaiAn

Zhangjiagang

**France**

Charlieu

Moulins

**Germany**

Wilhelmshaven

**India**

Pune

**Italy**

Niella Tanaro

**Portugal**

Baltar

Fânzeres

**USA**

Manitowoc

Port Washington

Shady Grove

This document is non-contractual. Constant improvement and engineering progress make it necessary that we reserve the right to make specification, equipment, and price changes without notice. Illustrations shown may include optional equipment and accessories and may not include all standard equipment.